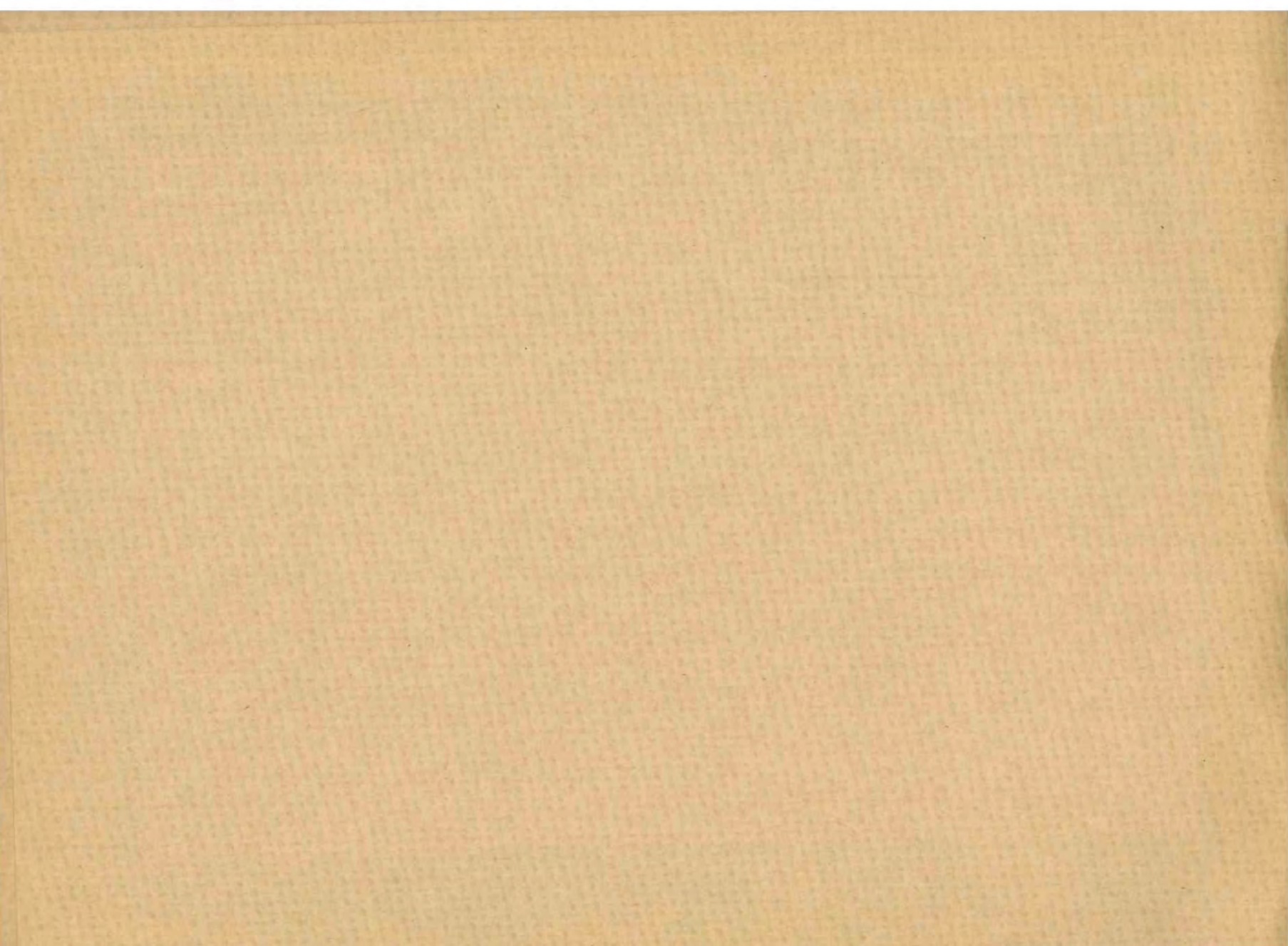
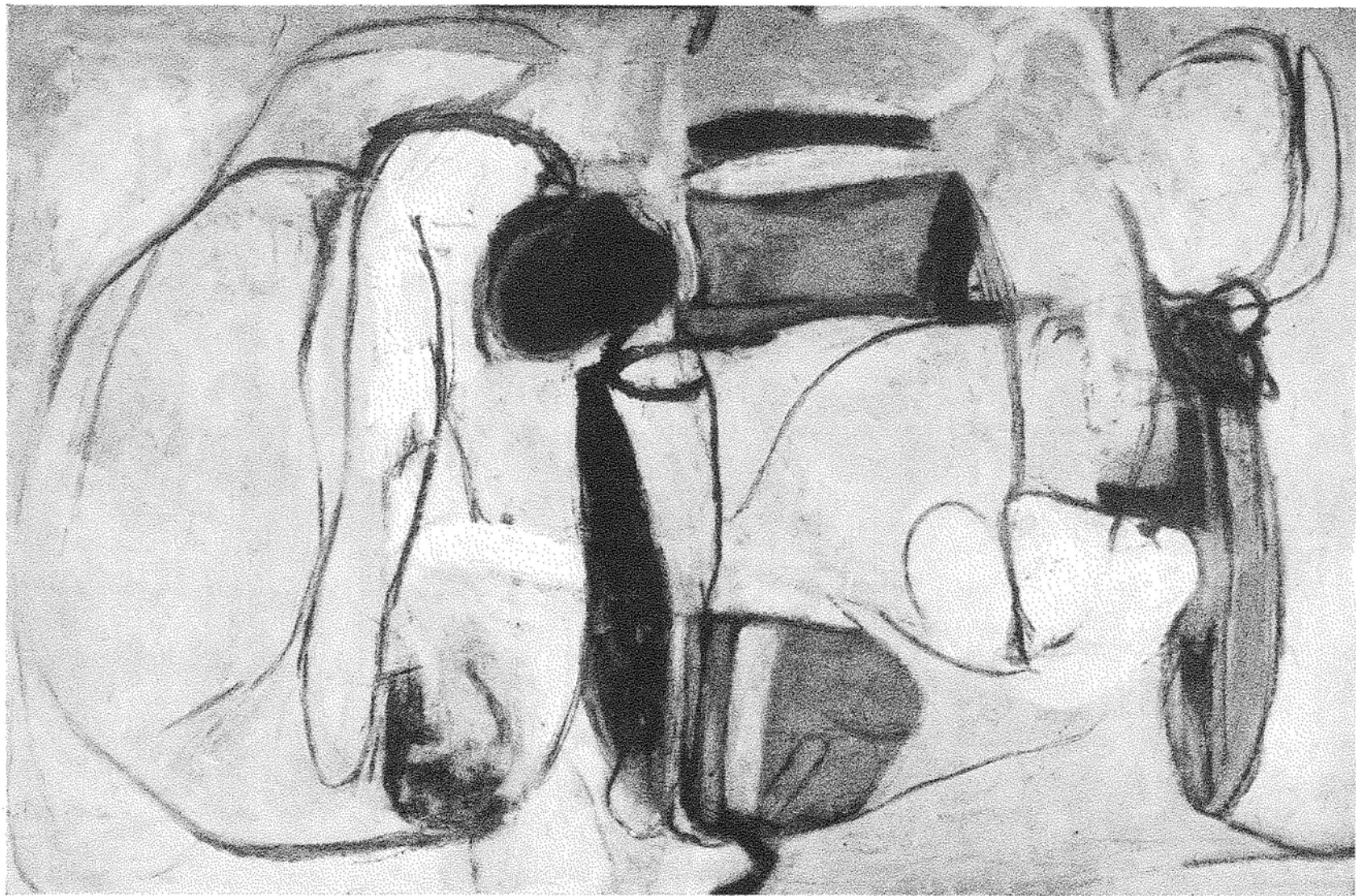


**CONTEMPORARY
ART
SOCIETY
ANNUAL REPORT
1960-61**





Brett Whitely: Untitled White Painting 1961, 45 x 67 ins.



Ralph Brown: Swimming Movement, bronze 1961, presented Swansea



Adrian Heath: Red Painting 1959, 78 x 72 ins, presented Melbourne

**Contemporary Art Society,
Tate Gallery,
Millbank, London SW1**

Patron

Her Majesty Queen Elizabeth the Queen Mother

Executive Committee

Whitney Straight CBE MC DFC (Chairman)
Anthony Lousada (Vice-Chairman)
Peter Meyer (Honorary Treasurer)
G L Conran (Honorary Secretary)
Sir Colin Anderson
Raymond Mortimer CBE
Eardley Knollys
Sir John Rothenstein CBE
Eric Newton
Mrs Oliver Parker
Dr Alistair Hunter
Derek Hill
Bryan Robertson OBE
Hon Michael Astor
John Sainsbury
Lord Croft
Alan Bowness
James Melvin

Organising Secretary Pauline Vogelpoel
Assistant Juliette Black

Purchases 1961

Kenneth Armitage

Charles Blackman

Arthur Boyd

Ralph Brown

William Crozier

Martin Froy

Anthony Fry

Adrian Heath

John Hubbard

Henry Mundy

Key Sato

Brett Whiteley

Buyer John D Sainsbury

Figure, mainly head, arms and legs 1962
(wash drawing)

The Family

Nude washing in a creek

Swimming Movement (bronze)

Fall

Standing Figure

Dancing Group

Red Painting 1959

Wandsworth

Float

Contraste Violet

Untitled White Painting

Gifts to the Society

Frank Avray Wilson

Configuration in yellow and black,
(anonymously through the Redfern Gallery)

Loans made by the Society to exhibitions

The Welsh Committee of the Arts Council 'Sculpture 1961'

The Arts Council 'Contemporary British Landscape',

'Recent Australian Painting'

Paris Biennale des Jeunes, Australian section

Hemel Hempstead Arts Festival

Spode House, Lichfield 'The Human Head and Figure'

Manchester Institute of Contemporary Art 'Bryan Wynter and Roger

Hilton'

National Gallery of Modern Art, Edinburgh. Inaugural Exhibition

Loans to hospitals, colleges and further education groups

The Electricity Council

London University Flying Club

London University Senate House

London University Queen Mary College

London University Royal Free Hospital Medical School

International Nickel Company

Architectural Association

Camberwell Chest Clinic, St Giles Hospital

National Hospital for Nervous Diseases

Bristol Siddeley Engines

Pictures and sculpture presented to art galleries 1961

Tate Gallery

Victoria & Albert
Museum
Aberdeen
Barnsley
Bath
Batley

Belfast
Bilston
Birkenhead
Birmingham
Blackburn

Blackpool
Bootle
Bournemouth
Bradford

Brighton
Bristol
Bury
Camberwell
Cheltenham

Coventry
Darlington
Derby
Doncaster
Dudley
Dumfries

Ceri Richards Design for a Backcloth Dylan
Thomas Reading (gouache)
Lawrence Gowing Path with Elder and Hazel
(oil)
Munos Lucio Tabla 21, 1959 (oil)

Georges Mathieu Drawing (gouache/ink)
Anthony Fry Dancing Group (fresco)
Sandra Blow In the beginning (oil)
M A Gambara Townscape (oil)
Z Kachadoorian Head of Robert Pen Warren
(drawing)

Henry Inlander Creation of Eve (oil)
Freda Sargent Still life (oil)
Stefan Knapp Painting 1960 (enamel)
Piero Sadun Abstract (oil)
Josef Herman 3 Women with Sheaves of Corn
(water colour)

Michael Wishart Lac d'Annecy (oil)
Henry Inlander Shallow Pool (oil)
Merlyn Evans Window by Night (oil)
Keith Vaughan Martyrdom of Saint Sebastian
(oil)

Alan Reynolds Autumn Evening (water colour)
Richard Smith Salem (oil)
Gill Levin Rocks and Water, Mialet (oil)
Josef Herman Autumn Idyll (oil)
Robert MacBryde Woman in Blue Shawl
(water colour)

Robert Medley Factory at Sheffield (oil)
Peter Potworowski Window in Spain (oil)
Sidney Nolan Excavation 1954 (ripolin)
Martin Froy Standing Figure (oil)
William Crozier Beanfield, Essex (oil)
Paul Feiler Atlantic Rocks (oil)

Dundee
Durham
(Bowes Museum)
Durham University
Kings College
Eastbourne
Edinburgh
National Gallery
of Modern Art
Glasgow Museum
Glasgow University
Art Collections

Harrogate
Hereford

Huddersfield
Hull
Kettering
Kings Lynn
Leamington Spa
Leeds
Leicester

Lincoln

Liverpool
Maidstone
Manchester (City
Art Gallery)
Manchester
(Rutherford Loan)

Robert MacBryde Still life (oil)

Anthony Gross Le Boulve Suite (etching)

Francis Bacon Study for Figure No. 6 (oil)
Trevor Bell Summer Painting (oil)

Sidney Nolan Leda and the Swan (oil)
Denis Mathews Chinese Scene (oil)

Robert Colquhoun Two Heads (monotype)
Evert Lundquist Still Life (etching)
Martin Froy Cafe (oil)
Mary Kessell Flight into Egypt (watercolour)
Anthony Gross etching from the Le Boulve
Suite

Jack Smith Sea Rise and Fall (oil)
Key Sato Contraste Violet (oil)
Joan Eardley The Sea, winter 2 (oil)
Jeffery Camp Black North Sea (oil)
Mary Kessell Head of Girl (gouache)
Alan Davie In the face of the witch (oil)
Roger Hilton Spiral (oil)
David Bomberg Head (drawing)
Anthony Gross Etching from Le Boulve
Suite (etching)
Raymond Mason Two studies of 3 Girls seated
(ink)
Prunella Clough Net, barrow and Float (oil)
Anne Yeats Red on Green (oil)

Robert Colquhoun Mater Dolorosa (oil)

D Hamilton Fraser Composition (oil)

Manchester
University
(Whitworth Gallery)
Mansfield
Merthyr Tydfil
Middlesbrough
Newark

Newcastle

Newport

Norwich
Nottingham
Oldham
Oxford
Plymouth
Preston
Rochdale
Rotherham
Rugby

Salford
Scarborough

Sheffield

Southampton
Southend
Stalybridge
Stoke on Trent
St Pancras
Swansea
Swindon

Paul Reyberolle Paysage 58 (oil)

E McKnight Kauffer Landscape (watercolour)

Angus Neil Boy in Cap (oil)

Jan Le Witt Ladder Pavillion (gouache)

Renato Guttuso Raft of the Medusa (oil on paper)

Sheila Fell Fields behind Aspatia (water colour)

Josef Herman Four Studies of Miners (pen and ink)

Terry Frost October Red Wedge (oil)

John Christoforou Head of Woman (oil)

Raymond Mason Les Epouvantees (ink)

David Jones Ship off Inys Bar (water colour)

Peter Lanyon High Field (oil)

Joseph Duncan Abstract (oil)

Renzo Vespignani Passagio Urbano (oil)

Basil Blackshaw Blue Landscape (oil)

Louis le Brocqy Ageing Man Washing (gouache)

James Leong Green Journey into Gold (oil)

Elizabeth Collins Three thousand Wise Men (gouache)

Adrian Ryan Pollarded trees (monotype)

Bernard Meadows Running Bird Totem (bronze)

Philip Martin Painting 1959 (oil)

Allin Braund The Estuary (oil)

Mary Kessell Winter Wood (drawing)

George Fullard Old Woman (concrete)

Peter Kinley Grey Tower (oil)

Ralph Brown Swimming Movement (bronze)

Charles Blackman The Family (oil)

Wakefield
Warrington
Wolverhampton

Worksop
York

Australia

Adelaide
Ballarat
Brisbane

Melbourne
Perth
Sydney

Canada

Hamilton
London
Montreal
Ottawa
Toronto
Vancouver

South Africa

Cape Town
Kimberley

New Zealand

Auckland
Dunedin
Nelson

USA

New York, Museum
of Modern Art

F N Souza Supper at Emmaus (oil)

Patrick Swift In the Garden (oil)

Nigel Lambourne Waitress: Trudy Fallada (drawing)

Kit Barker Hadrians Villa (oil)

Bryan Wynter Under Mars (oil)

Terry Frost Black, white and pink (oil)

John Hubbard Wandsworth (oil)

Graham Sutherland Predatory Form (lithograph)

Adrian Heath Red Painting 59 (oil)

Frank Avray Wilson Free (oil)

Alexander Weatherston Picnic (oil)

Paul Nash Shell holes 1914 (chalk)

Augustus John The Family, cartoon (chalk)

Albert Bitran Le village a Gordes (oil)

William Crozier The Fall (oil)

Harold Cohen Composition (oil)

Frank Avray Wilson Configuration in yellow and black (oil)

Craigie Aitchison Triptych (oil)

Roger de Grey Interior (oil)

Henry Mundy Objects Lost (oil)

Carlo dalla Zorza Burano (oil)

Adrian Stokes Ascona Landscape (oil)

Ceri Richards Poisson d'or (print)

Chairman's Report January 1962

My last report dealt with the Society's Fiftieth Anniversary in detail and the exhibition organised to honour it. The year 1961 has also been an eventful one and on the initiative of our charming and efficient Organising Secretary, several innovations have been introduced.

In order to facilitate the viewing of our pictures intended for distribution, we decided once again to hold an exhibition so that gallery directors could select works they wished to receive from

us. We are most indebted to the Chairman and Trustees of the Whitechapel Art Gallery for allowing us to use the gallery and its facilities from September 7th to the 17th for this purpose. The exhibition was well attended both by members of the Society and the general public and we were pleased to welcome many gallery directors at the evening party held to open the exhibition.

The allocation of approximately 120 works to 90 public member galleries will shortly be completed after careful consideration of their wishes. This is a very difficult task as inevitably many galleries ask for the same picture. Final decision depends on many different factors such as subscriptions paid, what work was allocated previously, and the particular type of collection being formed.

For housing us and our pictures so comfortably and under such pleasant circumstances we must once again offer our thanks to Sir John Rothenstein, the Chairman and Trustees of the Tate Gallery. We are indeed most grateful.

During the year we held two delightful evening parties – one at the Tate Gallery on 21st June for the Daumier Exhibition and the other a special evening preview of the Bührle Collection at the National Gallery on September 27th.

We are most indebted to Mr Wilfred Evill for allowing us to visit his collections in Welbeck Street and Eton Avenue in April, and also to Mr and Mrs H. P. Juda and to Lord Croft for opening their collections to members on September 30th. These visits prove tremendously popular – we hope that the small charge of 2/6 which we have decided to make to cover the costs of printing and attendants fees will not be misinterpreted. If members have any ideas about collections they wish to see, Miss Vogelpoel would I know be more than pleased to consider their suggestions.

On the evening of the 13th April the New Art Centre very kindly invited members to a special evening preview of an exhibition of paintings by John Hubbard and on the 5th June Bryan Robertson gave another of his excellent talks at the Whitechapel Art Gallery on the Australian Paintings.

I am very pleased to announce that the innovations introduced

this year were a great success – namely the Society's ventures into travel abroad. In May Miss Vogelpoel took a party of fifty members by chartered aircraft to Amsterdam for the day. The party was received by the Assistant Director of the Stedelijk Museum, who personally conducted them around the gallery. After a Javanese lunch members visited the Rijksmuseum and toured canals before flying back to London. In October seventy-two members flew to the United States by specially chartered plane for a memorable ten day trip to New York and Washington. Visits to over a dozen important private collections were arranged as well as public galleries and new buildings. The International Council of the Museum of Modern Art organised a special reception in the Society's honour, as did Mrs John Hay Whitney and Mrs Ben Sonnenberg. We are most indebted to the Council for the assistance they gave Miss Vogelpoel with her New York arrangements. The trip was a great success and much enjoyed by those fortunate enough to have taken part in it. As you can imagine, a great deal of organisation was necessary but Miss Vogelpoel rose to the occasion with honour. We also made a profit which will, of course, go towards the acquisition of new works. We hope to organise further excursions this year. As you know, our minimum subscription of one guinea has been in force for the last fifty years. During this period printing and office expenses have risen enormously and so of course has the cost of pictures. Your Committee have therefore decided, after careful consideration, to raise the subscription to two guineas as from a date to be announced later. It has also been decided to charge a minimum subscription of five guineas to member galleries. This subscription will entitle the gallery to a drawing, water-colour or print only. A minimum subscription of fifteen guineas will be charged to those galleries wishing to be entitled to an oil painting.

Finally, I know that all members would wish me to take this opportunity of congratulating Miss Pauline Vogelpoel on becoming a Member of the Order of the British Empire. This recognition by Her Majesty The Queen of Miss Vogelpoel's fine work will bring much satisfaction to all who know and appreciate how well she deserves this honour.

Honorary Treasurer's Report January 1962

The 1960 accounts, which I am now presenting, follow a familiar pattern. Not only, I am glad to say, with regard to our income and expenditure, but also in respect of the increasing net surplus available for the purchase of works of art.

Our income of over £5,800 was substantially higher by more than £650. Nearly £400 of this came from increased subscriptions and refunds of income tax and, although we did not have an Exhibition, which is usually in itself a source of income, we made a great deal more money on our Parties, notably our glamorous Spanish evening during the Picasso Exhibition. It was partly the success of this Picasso Party that accounted for our increase in membership, but I think we were also helped by printing, in the Annual Report, both our members' names and whether or not they paid by Deed of Covenant. This certainly seemed to imbue some of our members with a certain crusading spirit.

As in previous years, we spent approximately £3,000 on purchases and Grants in Aid and our general expenses remained at much the same level of about £2,100. In response to a suggestion by one of our members, we have this year for the first time given a breakdown of these expenses and I hope this will be found useful. Last year, I reported that about £200 of our 1959 expenditure was non-recurring and the only item which seems to call for comment is the increase of £115 in the cost of the Annual Report. This was largely due to including the list of members, but as I have already pointed out, I think this has brought tangible results. However, it is certainly a high figure and we are trying to see whether we can reduce it this year.

In order to correct a certain misconception, I should like to point out that the Expenses shown in the accounts do not include any of the direct expenses of our Parties. The cost of notices, tickets, catering, gallery staff, etc. are all taken into account before arriving at the net profit figure. However, we do not apportion such items as typographer's fees which are attributable both to parties and other activities of the Society.

One of our members has commented on what seemed to him the extravagance of our report and notices. We do try to keep the

cost of these as low as possible, but we think it important that a Society such as our's should produce printed matter that is attractive. Our invitation cards are frequently placed on members' mantelpieces and I am sure that the fact that they are well-designed does help to bring us new members. Here again, however, we are examining the whole matter to see if some economies can be effected.

You may be surprised that we finished the year with a surplus of £711. It is certainly not due to our finding any difficulty in spending our money. However, we are mounting an important Exhibition in a year's time and we thought it prudent to make a profit in the years in which we hold no Exhibition, in order to make substantial purchases when we do, and thereby help in encouraging artists to submit worthwhile work.

During the coming year, we hope to have the opportunity of revising our Articles of Association and bringing them into line with modern practice. I hope that, at the same time, we can take similar steps with regard to our accounts which are at the moment somewhat old history by the time they are presented to you. What we should like to do is to hold a meeting in the early summer of this year to ask you to approve new Articles and also the 1961 accounts. Then in succeeding years, we should be able to hold our annual meeting at a season when the accounts are more up to date and when members who wish to attend should find the weather conditions somewhat easier to brave.

Honorary Treasurer's Report June 1962

It is such a short time since I presented the 1960 Accounts that, on this occasion, I shall confine myself to a brief explanation of the 1961 Accounts which are now before you.

Our total income of £5413 5s 8d was nearly £400 less than the previous year, due to reduction in Bequests and Donations and the profits on parties. In 1960, however, both these items were exceptional, the party profits being largely derived from our mammoth Spanish evening during the Picasso exhibition.

It is encouraging, however, that our main source of income, namely subscriptions, continues to show an upward trend which

will, I hope, be even more marked in the present year when the new increases come into force.

In 1961, we spent £2,500 on the purchase of works of art, nearly £500 less than in 1960, but providing for the second year running a surplus for the year of approximately £700, as we again had no major exhibition.

Our expenses of £2168 15s 3d were only just over £60 more than in 1960, the inevitable increases being offset by having no permanent typographer and by arranging for a slightly cheaper Annual Report. In this connection, I should point out that hitherto the cost of the Annual Report has been included in the accounts for the year in which it was issued, not the year to which it relates. On this occasion, however, we are providing one Annual Report to cover two separate years' Accounts, and we have included in the 1961 Accounts the estimated cost of the Report for that year.

I should perhaps add that since the date of the Balance Sheet, we have sold the undated War Stock which we patriotically bought many years ago, and we have reinvested the proceeds in medium dated stock. You will observe in the Balance Sheet that we have transferred £75 to the Investment Provision Account, which will cover the final loss on the sale.

List of members : Subscribing galleries

The following is a list of members of the Contemporary Art Society on 31 December 1961. *Note:* Names of members joining after December 31 1961 will appear in the list of members for 1962.

Aberdeen: Art Gallery and Industrial Museum (£15.15.0)
Adelaide: National Gallery of South Australia (£10.10)
Auckland: City Art Gallery (£10.10.0)
Ballarat: Fine Art Public Gallery Association (£10.10.0)
Barnsley: Cannon Hall (£10.10.0)
Bath: Victoria Art Gallery (£7.7.0)
Batley: Bagshaw Art Gallery (£5.5.0)
Belfast: Museum and Art Gallery (£10.10.0)
Bilston: Public Library and Museum (£5.5.0)
Birkenhead: Williamson Art Gallery (£26.5.0)
Birmingham: City Art Gallery (£15.15.0)
Blackburn Art Gallery (£3.3.0)
Blackpool: Grundy Art Gallery (£5.5.0)
Bootle: Public Library and Museum (£15.15.0)
Bournemouth: Russell Cotes Art Gallery (£15.15.0)
Bradford: Corporation Art Gallery (£15.15.0)
Brighton: Museum and Art Gallery (£10.10.0)
Brisbane: National Gallery of Queensland (£10.10.0)
Bristol: Art Gallery and Museum (£5.5.0)
Bristol Art Gallery, Association of the Friends (£5.5.0)
British Museum: Dept of Prints and Drawings (£10.10.0)
Bury: Corporation Art Gallery and Museum (£5.5.0)
Camberwell: South London Art Gallery (£31.10.0)
Cape Town: National Gallery of South Africa (£21.0.0)
Cardiff: Dept of Art, National Museum of Wales (£10.10.0)
Carlisle: Public Library, Museum and Art Gallery (£2.2.0)
Cheltenham: Public Library, Art Gallery and Museum (£10.10.0)
Coventry: Herbert Temporary Art Gallery (£10.10.0)
Darlington: The Public Museum (£5.5.0)
Derby: Museum and Art Gallery (£10.10.0)
Doncaster: Museum and Art Gallery (£15.15.0)
Dudley: Art Gallery (£15.15.0)
Dumfries: Gracefield Art Centre (£10.10.0)
Dundee: Museum and Fine Art Galleries (£10.10.0)
Dunedin: Art Gallery (£10.10.0)
Durham: Bowes Museum (£3.3.0)
Durham University: Hatton Gallery (£15.15.0)
Eastbourne: Towner Art Gallery (£21.0.0)
Glasgow: Art Galleries and Museum (£21.0.0)
Glasgow: University Art Collections (£5.5.0)
Hamilton, Ontario: Art Gallery (£15.15.0)

Harrogate: Corporation Art Gallery (£10.10.0)
Hereford: Museum and Art Gallery (£5.5.0)
Hove: Museum and Art Gallery (£2.2.0)
Huddersfield: Public Library and Art Gallery (£21.0.0)
Hull: Ferens Art Gallery (£26.5.0)
Kettering: Art Gallery (£5.0.0)
Kimberley, South Africa: Humphreys Art Gallery (£10.10.0)
Kings Lynn: Friends of the Museum (£3.3.0)
Lake District Art Gallery Trust (£5.5.0)
Leamington Spa: Museum and Art Gallery (£5.5.0)
Leeds: Temple Newsam House (£15.15.0)
Leeds: Art Collections Fund (£3.3.0)
Leicester: Museum and Art Gallery (£10.10.0)
Lincoln: Usher Art Gallery (£10.10.0)
Liverpool: Walker Art Gallery (£15.15.0)
London, Ontario: Public Library and Museum (£31.10.0)
Maidstone: Museum and Art Gallery (£2.2.0)
Manchester: Corporation Art Gallery (£26.5.0)
Manchester: Rutherford Loan Collection (£10.10.0)
Manchester: Whitworth Art Gallery (£10.10.0)
Mansfield: Museum and Art Gallery (£6.6.0)
Melbourne: National Gallery of Victoria (£25.0.0)
Merthyr Tydfil: Art Gallery and Museum (£3.3.0)
Middlesbrough: Art Gallery and Museum (£21.0.0)
Montreal: Museum of Fine Arts (£15.0.0)
Nelson, New Zealand: Bishop Suter Art Gallery (£10.10.0)
Newark: Gilstrap Art Gallery (£15.15.0)
Newcastle upon Tyne: Laing Art Gallery (£10.10.0)
Newport: Museum and Art Gallery (£3.3.0)
Northampton: Public Libraries, Museum and Art Gallery (£10.10.0)
North Western Federation of Museums and Art Galleries (£5.5.0)
Norwich: Castle Museum and Art Gallery (£10.0.0)
Nottingham: Museum and Art Gallery (£25.0.0)
Oldham: The Municipal Art Gallery (£5.5.0)
Ottawa: National Gallery of Canada (£31.10.0)
Oxford: Ashmolean Museum (£5.5.0)
Perth: Art Gallery of Western Australia (£15.15.0)
Plymouth: City Museum and Art Gallery (£10.0.0)
Preston: Harris Museum and Art Gallery (£10.10.0)
Rochdale: Art Gallery and Museum (£5.5.0)
Rotherham: Museum and Art Gallery (£10.10.0)
Rugby: Art Gallery and Museum (£5.5.0)
Salford: Royal Museum and Art Galleries (£10.10.0)
Scarborough: Art Gallery and Public Library (£10.10.0)
Sheffield: Graves Art Gallery (£10.10.0)
Southampton: The Art Gallery (£15.15.0)

Southend on Sea: Beecroft Art Gallery (£5.5.0)
 Stalybridge: Astley Cheetham Art Gallery (£5.5.0)
 Stirling: Smith Art Gallery and Museum (£5.5.0)
 Stoke on Trent: Museum and Art Gallery (£15.15.0)
 Swansea: Glynn Vivian Art Gallery (£21.0.0)
 Swindon: Museum and Art Gallery (£5.5.0)
 Sydney: National Gallery of New South Wales (£26.5.0)
 Toronto: Art Gallery (£33.1.0)
 Vancouver: Art Gallery (£33.1.0)
 Victoria and Albert Museum (£15.15.0)
 Wakefield: City Art Gallery (£5.5.0)
 Wakefield: Permanent Art Fund (£5.5.0)
 Warrington: Museum and Art Gallery (£5.5.0)
 Worksop: Art Gallery and Museum (£10.10.0)
 Wolverhampton: Art Gallery and Museum (£5.5.0)
 York: City Art Gallery (£10.0.0)

Individual members

Aarons, Leo Esq.*
 Aarons, Mrs Leo*
 Abbey, Major J R
 Abrahams, Mrs Henry
 Abrahams, Maurice Esq
 Abrahams, Michael Esq
 Abrahams-Curiel Mrs*
 Absalom, F R Esq
 Absalom, Mrs F R
 Abson, W W Esq
 Acheson, Miss S*
 Ackroyd, Mrs T
 Acton, Mrs H B
 Acworth, A W Esq
 Adam, J T K Esq
 Adam, Peter Esq*
 Adams, Mrs Patricia*
 Adeane, Sir Robert OBE*
 Addison, P Esq
 Adler, O Esq
 Agar, Miss Eileen
 Agnew, Geoffrey Esq
 Ainley, Mrs J
 Aldis, Miss Frances
 Aldridge, Miss E*
 Alexander, Mrs Daphne
 Alford, P L Esq
 Allen, C E Esq
 Allen, R S S Esq
 Allen, Robert Esq
 Allen, Mrs Robert
 Allen, Mrs Scholefield
 Alley, Ronald Esq
 Alport, E A Esq*
 Altman, Dr M
 Alton, E Heaton Esq*
 Alton, Mrs Kate H*
 Amies, Hardy Esq
 Amory, Mrs L H
 Anderson, Sir Colin*
 Anderson, Lady*
 Anderson, Sir Donald
 Anderson, Lady
 Anderson Miss D E

Anderson, Miss H C
 Anderson, Mrs Jean
 Anderson, Miss J L*
 Andraee, Mrs C C
 Andrews, Stephen Esq
 Angus, Miss M M
 Angwin, Miss Sally
 Anker, Miss E
 Anrep, Boris V Esq
 Anrep, Miss Helen
 Anstruther, Ian Esq
 Appelbe, Ambrose Esq
 Appelbe, Mrs Ambrose
 Appelby W E F Esq
 Arbuthnot, Miss Helen*
 Archdale, J Esq
 Archdale, Mrs P
 Archer, Miss D M
 Archer, Miss Peggy
 Architectural Association
 Arden, Mrs Dorothy*
 Armitage, Mrs Kenneth
 Arnold, Mrs M
 Arundel, Miss E D
 Aschan, Mrs M
 Ash, Mrs Ruth
 Ashen, Mrs B P
 Asher, Miss Florence
 Ashley, Miss F M
 Ashton, Lady*
 Aspinwall, Mrs W D
 Asquith, The Hon Mrs Betty
 Assheton, Mrs John R
 Astor, The Hon Michael
 Astor, The Hon Mrs Michael
 Astor, The Viscountess
 Atkin, Mrs Anita
 Atkins, Dr W G*
 Atkinson, G H Esq
 Atkinson, Mrs S W
 Attenborough, John Esq
 Auerbach, Dr Erna
 Aukin, Charles Esq
 Austin, Henry Esq*
 Avery, R F Esq
 Avery, Mrs R F

Baddeley, Mrs J
 Baer, J M Esq
 Bagratini, Dr L*
 Bagrit, Leon Esq
 Bagrit, Mrs L
 Bailey, Miss Mary
 Baillieu, Mrs Diana
 Baird, Miss Grizelle
 Baker, Dr Charles
 Baker, Mrs Pearl
 Baker, R W H Esq
 Bakirzis, P E Esq
 Balfour, Miss Nancy
 Ball, Miss Julia
 Ball, Mrs T M
 Ballantine, Miss S
 Balston, T Esq
 Balthazar, Miss A
 Bang, Mrs Marie
 Bang, Per Esq
 Banks, Miss R G*
 Banks, R L Esq MC*
 Banszky, Dr L
 Banwell, Dr J G
 Barber, R O Esq*
 Barclay, Sir Colville Bt
 Bareau, Mrs Paul*
 Baring, E B Esq
 Baring, Hon R. A
 Barker, E G Esq
 Barker, R M Esq
 Barker, Mrs Mary
 Barker-Mill, P Esq
 Barker-Mill, Mrs P
 Barki, Miss Rosita
 Barkley, Mrs Hilda
 Barkley, Miss H
 Barlow, Sir Alan Bt GCB KBE
 Barlow, Lady
 Barlow, Dr. E D*
 Barnes, Mrs B
 Barnett, O B Esq
 Baron, Mrs Julia
 Barr, Mrs Tonde
 Barratt, Mrs S
 Barratt, S Esq

Barrett, A S D Esq*
 Barrett, H I Esq
 Barrett, Miss Mary
 Barrett, Mrs P R B*
 Barrington-Cooper, Dr
 Barrow, John Esq
 Bartleet, A P Esq
 Barton, Lady Joyce
 Barton, Mrs M L G
 Barwell, D Esq
 Basildon Civic Arts Society
 Bassett-Wilson, F G Esq
 Bastable, Miss L
 Bateman-Brown, O Esq
 Bates, H E Esq
 Batham, C E H Esq
 Battersby, Martin Esq
 Baxter, Mrs M
 Baxter, W T Esq*
 Beadle, John Esq
 Beadle, Mrs J
 Beaman, Lady
 Bearpark, Dr D M
 Beauchamp, Dr G
 Beauprez, Mrs V
 Beazley, H T Esq
 Beazley, Mrs Susan
 Beckett, Sir Martyn
 Beddington, Lt Col F
 Beer, Mrs D E*
 Behrens Victor Esq
 Beit, Sir Alfred, Bt
 Bell, Anthony Warburton Esq
 MC

Bell, Clive Esq
 Bell MacDonald, Mrs F M
 Bell, D I E M Esq
 Bellord, George Esq
 Bellow, Miss C
 Ben Uri Art Gallery
 Benbow, H A Esq
 Bendon, M G Esq
 Benedict, M P Esq
 Benjamin, W Esq
 Benner, Mrs M P
 Bennett, Mrs G R

Bennett, Mrs Leo
 Bennett, Mrs R O
 Bennitt, M W Esq*
 Bennitt, Mrs M
 Benson, Mrs Agnes
 Bentley, Nicolas Esq
 Berbank, Albert Esq
 Berbank, Mrs A E
 Berens, Richard Esq
 Bergel H C Esq
 Bergel, Mrs P
 Berham, Mrs J
 Berman, T M Esq
 Berman, Mrs T M
 Bernal, Mrs M G*
 Bernstein, Sidney Esq
 Berridge, A L Esq
 Best, Henry N Esq
 Besterman, Dr E M M*
 Bettenson, Miss A S*
 Bevan, R A Esq*
 Bevan, Mrs R A*
 Bierer, I Esq
 Bigby, Miss M A M
 Biggar, Mrs Teddy
 Biggs, Miss M
 Bijur, G Esq
 Binny, J A F Esq
 Birks, Miss Lesley
 Birley, Mrs A M
 Birt, Mrs Doris*
 Bishop, E Esq
 Black, Brinsley Esq
 Black, Mrs Mary
 Black, Misha Esq OBE RA*
 Blackett-Ord, A J E Esq*
 Blackett-Ord, Mrs J
 Blackman, Mrs G E
 Blackham, A J Esq
 Blairman, S Esq
 Blake, John F P Esq*
 Blake, Mrs Pamela
 Blaker, P A R Esq
 Bland, C M Esq
 Blau, Dr J M
 Blaxland Levick, Mrs S

Bliss, J Howard Esq
 Bliss, Mrs Mary*
 Bloch, Mrs Charlotte
 Blom, Harold Esq*
 Blom, Mrs Jane*
 Blond, Mrs E
 Blunden, Henry Esq*
 Blunt, Prof. Sir A F
 KCVO, FBA

Blunt, Miss Priscilla
 Blyth, D F Esq*
 Boag, Miss Susan
 Body, Miss C
 Bohm, Mrs J C
 Boissevain, D Esq
 Boissevain, Mrs D
 Boland, Miss Judy
 Bolton, J G V Esq
 Bomford, H T P Esq*
 Bond, John Stuart Esq
 Bone, Lady
 Bonham-Carter,
 Lady Gertrude

Bonner, Miss Mollie
 Bookman, Miss Dorothy
 Borchard, Dr Ruth
 Borges, T W Esq*
 Boswell, James Esq*
 Botello, Senora Maria de
 Bottard, Mrs Joan
 Bottoms, J C Esq
 Bourne, Stafford Esq*
 Bouskell-Wade, G E Esq
 Bowdler, Miss B
 Bowett, Mrs D
 Bowman, Mrs Betty
 Bowman, Mrs W
 Bowness, Alan Esq*
 Bowness, Mrs Alan
 Boxer, Mark Esq
 Boyd, D. W Esq
 Boydell, Peter Esq
 Boyland, Professor E
 Braby, Miss C
 Braby Miss P
 Bradbury, Ian Esq

Bradford, Stanley Esq
 Bradley, Mrs John
 Branch, Mrs F M
 Branch, Mrs J A
 Branchini, Charles J Esq*
 Brangham, Mrs K J
 Brausen, Mrs Erica
 Bredin, Hugh Esq
 Breeden, David Esq
 Brenner, Miss Trude
 Brett, Hon. Lionel*
 Brewer, John H
 Bridges, Mrs M
 Brinton, Mrs M K
 Bristol Siddeley Engines Ltd
 Britcher, Rex Esq
 British Council, Fine Art Dept
 Broadbent, Mrs Mary
 Broadbent, Mrs Moira
 Broadbridge, The Hon Majorie
 Singleton

Brockes, P T Esq*
 Brockhurst, Mrs P W
 Brocklebank, Lady Grace
 Brod, A Esq
 Brodie, Mrs C A
 Bromley-Davenport, Mrs L
 Brommelle, N S Esq
 Brook, Mrs Helen
 Brown, Miss A F
 Brown James A Esq
 Brown, Mrs J A
 Brown, O G F Esq
 Brownlow, Miss M
 Bruce, Mrs A
 Bruce, Miss C L
 Bruckmann, P Esq*
 Bruckmann, Mrs P*
 Bryant, Mrs Joan
 Bryant, Mrs Thelma
 Bryson, J N Esq
 Buckingham, Victor Esq
 Buckingham, Mrs V
 Buckman, B Esq
 Buckman, Mrs B
 Buckwell, Mrs

Bud, Mrs K
 Bulkeley-Johnson, Capt V
 Bulkeley-Johnson, Mrs V
 Bull, G V Esq
 Bull, Mrs K M
 Bullock, John Esq*
 Bullock, Mrs John*
 Bulow, Claus Esq
 Burges, Miss
 Burgess, Comdr C R
 OBE, RN*

Burgess, Mrs G L*
 Burland, C A Esq
 Burn, M Esq
 Burne, F Esq
 Burton, A J Esq
 Burton, Mrs A*
 Burton, Raymond Esq
 Burton, Mrs Raymond
 Buss, J H L Esq
 Butcher, G L Esq
 Butcher, Mrs G
 Butler, Mrs E
 Butler, M F Esq
 Butler, Miss P M*
 Butlin, Martin Esq*
 Buxton, Mrs M V
 Buxton:

The Noel Buxton Trust
 Byfield, I R D Esq
 Byliss, R Esq
 Byng, Robert Esq*
 Byron, Arthur Esq*

Caccia, Lady Anne
 Caddey, Miss Dacia*
 Cahn, Heinz Esq
 Calvert, R Esq
 Calvert, Mrs R
 Campbell, The Hon. James
 Champion, Miss M G OBE
 Champion, Oliver G Esq
 Cantelo, P G Esq
 Cantelo, Mrs B L
 Capell, Miss P
 Cardus, Mrs Neville

Fuller Lewis, Eric Esq
Fullerton, David Esq
Funnell, Miss Lillian*
Furlong, Dr George
Furse, Hubert E Esq
Furstner, Mrs U

Gabor, Mrs P
Gabriel, Miss C
Gadsby, J Esq*
Gadsby, Mrs C A
Gainford, Lady
Gainsborough, Dr
Gallagher, N Esq
Galway, James Esq
Gammie, Mrs
Gant, Dr J G
Gantz, Mrs Margaret
Gardener, James Esq
Gardiner, Julian Esq
Gardiner, Mrs Mary
Gardner, Miss Helen
Gardner, Dr S
Garland, Mrs E W
Garner, Miss Grace
Garsia, Lt. Col. Clive
Gaskell, Mrs M*
Gaunt, David, Esq*
Gavin, A D Esq
Geffen, I Esq
Gentle, Lady
Gibb, Mrs E M
Gibb, H S Esq*
Gibb, T Esq
Gibb, W B Esq
Gibbons-Grinling,
Anthony Esq*
Gibbs, Mrs Arthur
Gibbs, Miss Audrey
Gibbs, David Esq
Gibbs, Mrs David
Gibson, David Esq
Gilbert, A D F Esq
Gilbert, Curtis Esq
Gilbert, Mrs Curtis
Gilby, Miss M D

Gillard, Maurice Esq
Gillenden, H Esq
Gilley, Miss S
Gilliatt, Mrs R W
Gillie, Mrs Ann
Gillie, D R Esq
Gilroy, H Elliot Esq
Gimpel Fils
Gimson, H M Esq
Giordani, Dr A
Giordani, Dr Christine
Glaisyer, Miss E B
Glass, Miss M M*
Glasser, Moray Esq JP
Gledhill, Mrs Anne
Glenconner, Lady
Goddard, G K Esq
Goddard, Mrs Peggy
Godfrey, Mrs P
Godin, W D Esq
Godin, Mrs W D
Godwin, Keith Esq
Goetz, Mrs Berthe
Goff, Martyn Esq
Goffin, Peter Esq
Gold, J B Esq
Gold, Mrs J B
Goldberg, P Esq
Goldberg, Mrs P
Goldberger, Dr Edmund
Goldberger, Mrs Edmund
Goldfinger, Erno Esq
OPLG, LRI, BA
Goldie, Miss Mary
Golding Miss S
Goldman, Alfred Esq
Goldman, Maurice Esq
Goldrei, Mrs Irene
Goldring, D Esq
Goldworth, J G Esq
Goody, Dr William
Goodman, L Esq
Gordon, Mrs D W
Gordon, F R Esq
Gordon, Miss Helen J
Gordon, Mrs Tania

Gordon-Clark, Mrs. E*
Gordon-Clark, N
Gordon-Ives, The Hon Mrs
Gore, Mrs Simon
Goslett, Miss D
Gosling, Nigel S Esq
Gosling, Mrs V E*
Goudge, Mrs Elizabeth*
Gould, Mrs Delia
Gow, Miss Lucienne
Gowing, Prof Lawrence CBE
Grabowski, M Esq
Grace, Mrs Henry
Graham, Mrs M
Graham-Drew, J Esq
Grand, Miss M
Grant, Miss J V*
Grant, Mrs L W*
Granville, Philip Esq
Gratton-Storey, Mrs
Gravenstede, C G Esq
Gray, Mrs J N
Grazebrook, Mrs V G
Greatbatch, A R Esq
Green, Mrs Denis
Green, Peter M A Esq*
Green, Mrs
Greenburg, R B Esq
Greenburg, Mrs V M
Greenhalgh, N C M Esq
Greenhalgh, Miss N F*
Greenhill, Miss E
Gregory-Hood, Col A M H
Gresswell, Peter D Esq*
Grey, Mrs Dorinda
Grey, G B Esq
Grey, John W Esq
Grey-Edwards, H B R Esq
Grey-Edwards, Mrs H B R
Grier, Miss L CBE
Grierson, Ronald Esq
Griffin, Mrs Hestor
Griffiths, Mrs A M
Grimshaw, Miss M E
Gross, Anthony Esq
Gross, F M Esq

Grover, Mrs Regina
Grundy, Milton Esq
Guggenheim, Mrs Peter
Guiton, Miss Shirley
Gunary, Mrs Donald
Gunary, George Esq
Guppy, Nicholas Esq
Guttmann, Mrs Natasha
Guttman, Werner Esq
Gwynne-Jones, A Esq

Hackett-Jones, Miss R H
Hackman, Mrs N
Hadfield, John Esq
Hadjilias, Miss E
Hagestadt, Mrs Louise
Haigh, Mrs Anthony
Hailes, The Lord, PC
Hale, A N Esq
Hale, Mrs E
Hall, Clifford Esq
Hall, Miss Annie*
Hall, Dr E T
Hall, Mrs E T
Hall, Mrs Robert
Hamilton, Rev H A
Hamilton, Lady Rostrevor
Hamilton, Lady Ursula
Hamilton-Smith, N L Esq*
Hammersley, Mrs P
Hammersley, Mrs V*
Hampden, The Viscountess
Hancock, Mrs P G M
Hanley, Miss E
Hanna, Mrs Jessie
Hanna, Maurice E Esq
Harding, Charles Esq.
Harding, Herbert Esq
Harding, Mrs H
Hare, Miss Barbara
Hare, Miss K C
Harewood, The Countess of
Harewood, The Rt Hon
The Earl of
Hargreaves, Miss Joan
Hargreaves, Mrs

Harlech, The Rt Hon Lord
KG, PC

Harler, Mrs M C
Harling, R Esq*
Harlow, Miss F F
Harper, Thomas Esq
Harper, Mrs W
Harris, Mrs David
Harris, B L Esq*
Harris, Mrs May
Harris, Mrs Maurice
Harris, Miss P V
Harrison, Miss Dorothy
Harrison, Francis G Esq
Harrison, K P Esq
Harrower, Mrs Sylvia
Harston, Miss Ruth
Hart, Albert Esq
Hart, Louis Albert Esq
Hart, Jeremy Esq
Hart, Rev G H V*
Hartford, David Esq
Hartley, L P Esq
Hartzell, H E Esq
Hartzell, Mrs H E
Harvey, Peter Esq
Harvey-Geruts, Mrs W
Harwood, Miss Lucy*
Hassell, Mrs Julia
Haswell, Major A J D* ALS
Haswell, Mrs A J D*
Haut, F J G Esq
Haut, Mrs F J G
Havery, Miss M T
Hawkins, Mrs
Hawnt, J S Esq OBE
Hay, Ian Esq
Hayden, Mrs J D
Hayek, F S Esq
Hayes, J H Esq
Hayes, Miss Patricia
Hayter, Sir William*
Hayter, Lady*
Hayward, Miss C M
Hayward, John Esq CBE
Headlam-Morley, K Esq

Carlebach, A Esq
 Carless, H M Esq
 Carlill, S D Esq
 Carlisle, Mrs Anne
 Carlisle, C A Esq*
 Carmichael, Miss Jane
 Carmichael, K M Esq
 Carnwarth, A H Esq
 Carpenter, Peter Esq
 Carpenter, Mrs P E*
 Carr, Mrs Marjorie
 Carr-Saunders, Sir Alexander
 Carter, Miss Anne
 Carter, Donald Esq
 Carter, John Esq CBE
 Carter, Miss Peggy
 Carter, P. B Esq
 Carthy, J D Esq
 Caseley, Miss Rosamond
 Castaing, Miss A
 Catleugh, J D H Esq
 Cecil, Lady David
 Cemlyn-Jones, Sir Wynne
 Chadenet, Baronne
 Chamberlin, Miss L
 Chamot, Miss M*
 Champion, C L Esq
 Chance, I O Esq
 Chance, M Esq
 Chancellor, R D Esq
 Chandos, The Rt Hon
 Viscount DSO, MC
 Chaplin, Miss B A
 Chapman, Max Esq
 Chapman, R G Esq
 Charles, Mrs E H
 Charoux, Siegfried J Esq
 Charteris, The Hon Guy
 Chase, Michael Esq
 Cheesbrough, John Esq
 Cheesbrough, Mrs J
 Cheetham, Lady
 Chester, Mrs P J
 Chignell, Miss Majorie
 Chilton, Miss F
 Cholmondeley, Lady George

Choremi, Andre*
 Christie-Miller, W J Esq
 Christie-Miller, Mrs W J
 Christopherson, John Esq
 Christopherson, Mrs Anne E
 Clark, Sir Kenneth
 KCB, FBA*
 Clark, Lady*
 Clarke, A S Esq
 Clarke, Mrs A S
 Clarke, Gerald Esq
 Clarke, Miss J C
 Clarke, Louis C G Esq
 Clarke, Mrs M E
 Clarke, R D Esq*
 Clarke-Fort, Mrs Francoise V
 Clarkson, Mrs Georgiana
 Clay, Rachel, Lady
 Clegg, Miss Helen
 Clements, Dr E M B*
 Clements, Mrs E M B
 Clifden, The Rt Hon
 Viscount MVO
 Clifton-Taylor, A Esq*
 Clissold, Miss A J
 Cloake, Miss J D*
 Cochrane, John P Esq
 Cockayne, Jeremy Esq*
 Cockburn, Dr H D
 Cockle, Mrs Aileen
 Codrington, Mrs M B
 Coen, J Verney Esq
 Cohen, Dennis M Esq
 Cohen, Henry Esq*
 Cohen, Sir Herbert Bt OBE
 Cohen, Commander K
 CB, CMG, RN
 Cohen, Mrs Kenneth
 Cohen, Lady
 Cohen: The Leonard Cohen
 Fund
 Cohen, Myer Esq
 Cohen, M S Esq
 Colbeck, Miss Josephine H
 Cole, D N Esq
 Coleman, Mrs Jacques

Colinvau, R P Esq*
 Colinvau, Mrs R P*
 Collier, Miss J
 Collins, Mrs A
 Collins, Cecil Esq
 Collins, Mrs Georgette
 Collins, Miss Patricia
 Collins, Peter Esq
 Collyns, Mrs R C
 Colvin, Mrs Hugh
 Common, Mrs Enid*
 Compton-Smith, Miss C*
 Conlay, Miss Iris*
 Conn, Victor W A Esq
 Conran, G L Esq*
 Conran, Mrs J*
 Conybeare, Sir J J
 Cook, Mrs M
 Cooke, Mrs Diana
 Cooke, Mrs E
 Cooksey, Mrs M C
 Cooper, Mrs D F
 Cooper, Ivor Esq*
 Cooper, Mrs Ivor*
 Cooper, Terence*
 Cooper, Mrs Winifred
 Coopman, Mrs Mira
 Copplestone, Trewin Esq*
 Corcoran, Gerald Esq*
 Corp, A E Esq*
 Corp, Mrs W G*
 Corrie, Mrs Janet
 Corvin, Miss Vera
 Cosh, Miss M S
 Cosh, Miss Mary*
 Costello, Mrs Doreen
 Cottesloe, The Lord D L
 Courts, David Esq
 Coutts Milne, Mrs M
 Covell, Mrs H
 Cowan, John Esq
 Cowen, Mrs R S
 Cox, Sir George Trenchard
 CBE
 Cox, J R W Esq
 Cox, Mrs M N

Cozens, Miss J
 Crabtree, J A Esq*
 Crabtree, Thomas Esq
 Craig, Mrs David
 Craig, Mrs Yvonne
 Craig-MacFarlane, J E Esq
 Craps, Mrs E
 Crawford and Balcarres, The
 Rt Hon The Earl of, KT, GBE
 Craxton, Mrs L
 Creagh-Coen, Sir Terence
 KBE, CIE
 Cregan, Miss E*
 Cregan, Mrs J M*
 Crichton-Stuart, Lady Colum
 Chritchley, Mrs Margaret
 Crittall, Mrs A M
 Crocker, Mrs John
 Croft, The Lord*
 Croft-Murray, Edward Esq
 Croll, Mrs G le M
 Crombie, Miss M P*
 Cronyn, Hugh Esq
 Crooke, Miss Dorothy
 Croome, J L Esq
 Crosby, T Esq
 Crosfield, M C Esq
 Crossley, Mrs V
 Crown, Dr S
 Cullen, Mrs M
 Culme-Seymour,
 Sir Michael Bt*
 Cummings, M Esq
 Curwin, Alfred Esq
 Cusack A Esq
 Cusack, R V Esq* QC
 Custerson, Conrad Esq*
 Cuthbert, A D Esq
 Cuthbert, W M Esq
 Cutts, Mrs I E
 Dakeyne, Mrs D L
 Dale, R A Esq
 Dale, W L Esq*
 Dallas-Smith, Peter Esq*
 Dallas-Smith, Mrs*

Dalley, Dr V M
 Damiano, C Esq*
 Daniels, Miss B
 Darge, Ian Hamilton Esq*
 Dark, Frankland Esq
 Darlington, Mrs Hazel
 D'Armour, Miss Louisa
 Darracott, T M Esq* ARIBA
 Darrell, H F Esq
 Darwin, Prof Robin
 Datnow, A D Esq
 Davenport, Miss K M
 Davenport, Nicholas Esq
 Davenport, Mrs N
 Davidson-Houston, Major A C
 Davies, Mrs D
 Davies, Miss D
 Davies, Mrs G
 Davies, Miss Margaret
 Davies, Miss M
 Davies, R W Esq*
 Davies, Mrs T M
 Davies, T O Esq
 Davis, Dr Albert
 Davis, Mrs Albert
 Davis, Edward T Esq*
 Davis, Mrs E T*
 Davis, Frank Esq
 Davis, Mrs F
 Davis, Miss Joan L
 Davis, Robin Esq
 Davys, Dr Michael
 Dawe, E G J Esq
 Dawe, Mrs E G J
 Dawes, Mrs Irene
 Dawnay, Miss Jean
 Day, Kenneth Esq
 Day, Mrs Kenneth
 Day, Mrs Violet
 Deane, Miss Marjorie*
 Dearbergh, G F Esq
 Dearmer, G Esq
 De Beer, Miss M L
 Deeds, L Esq*
 De Fe, Baron Alexander
 De Gabarain, Miss Ana Maria

De Goguel, Mrs Anna
 Dehn, Roy A Esq
 Deighton, Mrs Elizabeth
 De Keyser, David Esq
 De Keyser, I Esq OBE*
 Dekk, Mrs Dorrit
 De La Warr, The Rt Hon
 The Earl
 De La Warr, The Countess
 Dellal, Mrs Z
 De Maistre, Roy Esq
 De Meric, Miss Rosalie
 Denchfield, C P S Esq
 Denison, Mrs A
 Denney, J A Esq*
 Denney, Mrs E E
 Denney, Mrs B M A*
 Denney, James Esq
 Denny, Peter Esq
 De Pass, Brian A Esq
 De Pass, Capt Daniel Esq
 CBE, RN Rtd
 De Pinna, Miss Janet
 De Quetteville, H L Esq
 Deutsch, Andre Esq*
 De Vere Hunt, Mrs J
 Deverell, G A Esq
 Dewey, Nicholas Esq
 Diamond, A E J Esq
 Dimsdale, Miss Priscilla
 Dixon, F C Esq
 Dixon, Guy H Esq
 Dobson, Miss M
 Dodds, E G Esq
 Dodge, Mrs A
 Dodgson, John Esq
 Dolbey, Miss E M
 Donaldson, Mrs A H
 Donaldson, Miss Lesley
 Dorey, Miss Catherine
 Dorf, Miss B
 Dormer, John Esq
 Douglas, Basil Esq
 Douglas, Miss I
 Dow, J C R Esq
 Drage, S M Esq*

Drage, Mrs S M*
 Drew, Miss Jane B
 Drew, Miss Joanna*
 Dreyfuss, Sylvain Esq
 Drogheda, Rt Hon The Earl of
 Drogheda, Kathleen
 Countess of CBE
 Druce, Miss E N C
 Drummond, Mrs H
 Duckett, Mrs Majorie
 Duckett, Mrs
 Duckworth, Arthur Esq
 Dugdale, Mrs Eric
 Duke, Mrs M*
 Dun, Miss Elizabeth
 Duncan, V Esq
 Dunn, Miss Stella*
 Dunn, Miss Sheila
 Dunne, Mrs Philip
 Dunning, Miss H
 Du Parc Braham, Major J C
 Dupre, John Esq
 Dutton, Ralph S Esq
 Duveen, Henry Esq
 Duveen, Mrs Phyllis
 Dyboscki, Mrs.
 Dyett, D E Esq
 Dyson, Miss J L

 Ealand, Dr. C T F*
 Eardley, Mrs Enid
 Easterfield, Thomas Esq*
 Easterfield, Mrs T E*
 Eastwick-Field, John Esq
 Eastwood, C G Esq*
 Eberstadt, G Esq
 Eccles, The Rt Hon
 Sir David PC, MP
 Eckersley, Mrs Nancy
 Edelman, M Esq MP
 Edgerley, John T Esq
 Edmonds, Mrs Michael
 Edwards, John Esq
 Edwards, R A Esq
 Edwards, Ralph Esq
 Edwards, Mrs Ralph

Egerton, Robert Esq*
 Egerton, S Esq
 Egon, Nicholas Esq*
 Einstein, Mrs Herbert
 Electricity Council
 Eley, Geoffrey Esq
 Eley, Mrs G
 Ellice, Mrs James
 Elliott, M Esq
 Ellis, Miss G N*
 Ellis, R A Esq
 Ellis D G Esq*
 Elsy, Miss Mary
 Elt, Fred Esq*
 Emslie, Miss Rosalie
 Enns, Mrs F*
 Ensing, Miss E C
 Ensor, Miss Catherine*
 Epril, C J Esq
 Ernest Brown & Phillips
 Erskine, The Hon. Robert
 Escott, James Esq
 Estorick, E Esq
 Etherington-Smith, R G Esq
 Eustace, Mrs Rowland
 Eustace, Miss V
 Evans, Lady
 Evans, Courtenay Esq
 Evans, L A Esq
 Evans Miss Lillian
 Evans, M O Esq
 Evans, Miss Ning
 Evans, Roger Esq*
 Evans, Mrs Roger*
 Evill, W A Esq*

 Fabian, E Esq
 Fader, R H Esq
 Fairbairn, Miss C N
 Fairbairn, Richard F Esq
 Fairfax, Mrs E
 Fairfax-Jones, Mrs T M
 Fairhurst, Harry Esq*
 Falber, Paul Esq
 Faringdon, The Rt Hon Lord
 Farley, J C Esq

Farley, Mrs Madalyn
 Farquharson, M G Esq
 Farr, Dennis Esq*
 Farrell, E A Esq
 Farrow, Arthur H Esq*
 Farson, Mrs Negley
 Feder, Mis Beatrice
 Fein, Mrs A M
 Fein, J G S Esq
 Fenn, Mrs C H
 Fenwick, Miss C
 Ferguson-Davie, Mrs
 Ferguson David K Esq
 Ferree, C J Esq
 Fickling L A Esq
 Field Reid, E Esq*
 Field Reid, Mrs*
 Finer, Dr J
 Finer, Mrs J
 Firth, Prof Raymond
 Fischer, H R Esq
 Fischman, Mrs Olga
 Fisher, Mrs H A P
 Fisher, Harold W Esq
 Fisher, Mrs Gloria Welby
 Flatau, Mrs H
 Flavell, G Esq*
 Flavell, Mrs G*
 Fleischman, Miss Asphodel
 Fleming, Mrs Ian
 Fleming, Comm. Ian
 Fleming, Ronald Esq
 Flemming, Mrs C W
 Flett, Alexander E C Esq
 Fone, Michael, Esq*
 Foord, Anthony Esq*
 Foord, Mrs A*
 Foot, Mrs A G
 Ford, R Brinsley Esq
 Forge, Mrs C M
 Forgan, Miss M G
 Forman, Mrs V S
 Forrest, Dr J
 Forrest, Denys M Esq
 Forrester, Mrs J
 Forster, A S Esq

Forsyth, Thomas Esq
 Foss, A A Esq
 Foster, Alfred W Esq
 Foster, Mrs Hugh
 Foster, John Esq QC, MP
 Found, James A Esq
 Fouracre, R Esq
 Fowler, Maurice Esq
 Foyle, Miss Christina
 Foyle, Dr
 Foyle, Mrs
 Fox, Mrs F D
 Fox Edwards, Mrs Pat
 Fraenkel, Mrs E
 Francois, Mrs M M L*
 Frankel, Cyril Esq
 Frankel, Mrs R
 Frankl, H F*
 Frankl, Mrs*
 Franklin, Dr Katherine
 Fredman, Mrs J
 Fredyna, Miss K
 Freebairn, Glen Esq
 Freedman, Mrs Jessica
 Freeman, Miss Joy
 Freeman, Mrs L M D
 Freeth, H A Esq
 Frenkel, Joe Esq
 Frenkel, Mrs R
 Freud, Ernst Esq
 Friday, Frank A Esq
 Friedeberger, Klaus Esq
 Friedman, Dr Charles
 Friedman, Mrs Charles
 Froy, W A Esq*
 Fry, Miss Faith
 Fry, Dr L S
 Fry, Sir Geoffrey
 BT, KCB, CVO
 Fry, Maurice E Esq
 Fry, R H Esq
 Fry, Mrs Rosina
 Fry, E Esq
 Fry, Mrs Stella
 Fuller, David J Esq
 Fuller, E H Esq

Heath, Adrian Esq
 Heath, Mrs N S*
 Heathcote, Miss M
 Heather, Miss M
 Hebden, Miss Rosemary
 Hecht, Alfred Esq
 Heckman, Mrs
 Hellman, E Esq
 Hellman, Mrs F
 Henderson, Miss Anne
 Henderson, W B Esq
 Henderson, W R G Esq
 Hendy, Sir Philip
 Heneage, Mrs J W
 Henrion, F H K Esq
 Henry, D Esq
 Herapath, S D Esq
 Herbert, Lady
 Herbert, G A J Esq
 Herbert, John S Esq
 Herbert, Lionel Francis Esq*
 Hereford, W R Esq
 Hermes, Miss G
 Herron, Mrs G D
 Hett, S A Esq
 Hewer, Prof
 Hewer, Mrs T
 Hewett, K J Esq
 Hewitt, Keith M Esq
 Hewlett, Roy Esq
 Hewlett, Mrs D M B
 Hey, Peter Wilson Esq
 Heygate, Mrs Elizabeth
 Heyworth, Miss Anne
 Hickling, Mrs A N
 Higgins, Miss Evelyn
 Hignett, R A Esq
 Hill, A D Esq*
 Hill, Mrs Charles
 Hill, J A Esq
 Hillgarth, Capt Alan RN
 Hillman, Mrs L S
 Hills, Miss Margaret
 Hillyard, Mrs
 Him, George Esq
 Hindle, Mrs

Hinchingsbrooke, The
 Viscountess
 Hirst, Miss O
 Hitchens, Ivon Esq
 Hoare, Sir Frederick
 Hoare, G Esq*
 Hoare, Mrs N M
 Hobart, Peter Esq
 Hobson, Miss Valerie
 Hodges, D M Esq
 Hodgeson, Mrs Mary
 Hodgkin, Eliot Esq*
 Hodgkin, Mrs E*
 Hodds, B W G Esq
 Hodin, Dr J P
 Hoff, Mrs Ruth
 Hogben, C Esq*
 Holdsworth, Mrs G
 Holland, Mrs Theodore*
 Hollweg, Mrs B
 Holmes, Mrs Max
 Holt, Alfred & Co
 (P H Holt Trust)
 Holt, Eric Esq
 Holt, G P Esq
 Hooberman, Ben Esq
 Hooper, Miss D M
 Hooton, Miss Esmee
 Hope, Mrs F H*
 Hope, Lord John MP
 Hope-Carter, Mrs
 Hope Wallace, Miss J
 Hopman, Miss L*
 Horitz, John Esq*
 Hornby, Sir Anthony
 Hornby-Steer, W R Esq
 Horne, Alistair Esq
 Horne, Mrs A
 Horner, Miss Jocelyn
 Horovitz, Mrs L
 Horrabin, J F Esq
 Horrocks, Lady Nancy
 Horwell, A R Esq*
 Hosp, Miss K-M
 Howard, Miss Gillian
 Howard, Michael Eliot Esq

Howard, Robin J S Esq*
 Howard, Stanley John Esq
 Howarth, Mrs Constance,
 Howison, Miss O N*
 Howkins, Mrs Shirley
 Hubbard, Mrs J
 Hudson, Mrs K
 Hudson-Davies A Esq OBE*
 Hughes, Graham Esq*
 Hughes, Mrs Graham*
 Hughes, Mrs M
 Hughes, Mrs Peter
 Hughes, William Esq
 Huizinga, Mrs*
 Hulse, Lady
 Hulton, Sir Edward
 Hulton, J W Esq
 Hulton, P H Esq
 Hummel, S A Esq
 Hummel, Mrs S A
 Hunt, Mrs B
 Hunt, Mrs H Harman
 Hunt, Mrs Stella
 Hunter, Dr Alastair FRCP
 Huntington, Mrs E C B
 Hussey, H D Esq
 Hussey, Mrs M
 Hutchinson, Mrs L F S*
 Hutchinson, William D Esq*
 Hutton, Clarke Esq
 Hutton, Mrs Clarke
 Hutton, Mrs G J
 Hylton, Lady
 Hyslop, A C Esq
 Ignatieff, Mrs G
 Inchbald, Michael Esq
 Inchbald, Mrs. M
 Inchcape, The Rt Hon
 The Earl of
 Inglefield, G S Esq
 International Nickel Company
 (Mond) Ltd
 Inwood, Norman Esq
 Irving, Mrs A V
 Irwin, D G Esq

Ivens, Edgar Esq
 Jackson, Mrs D A
 Jackson, Dr E F
 Jacobi, Mrs B
 Jacobs, A M Esq
 Jacobs, Mrs Phyllis A*
 Jacobs, Mrs Sophie
 Jacomb-Hood, Miss Gillian*
 Jacques, Mrs R M
 Jago, T Esq*
 Jago, Mrs T*
 James, Evan Esq
 James, Mrs Evan
 Jamieson, Lady
 Janes, Miss B
 Janson, Wilfrid Esq
 Jaray, Mrs L
 Jarnier, Mrs E
 Jayne, F O Esq
 Jenks, Mrs Patricia
 Jensen, Niels Esq
 Jenyns, Mrs Soame
 Jessel, The Lord*
 Jessop, Miss K H
 John, Mrs Augustus
 Johnson, Miss Grace
 Johnson, Miss K C
 Johnson, M N Esq
 Johnston, Miss Eva G
 Johnston, Nicholas Esq
 Johnston, Mrs N
 Johnstone, Mrs M
 Johnstone, William Esq OBE
 Jolliffe, Miss M*
 Jonas, Mrs Kathleen
 Jones, Dr F Avery*
 Jones, Chester Esq
 Jones, Mrs Geoffrey*
 Jones, Mrs Humphrey
 Jones, Miss K N C
 Jones, Sir Lawrence Bt
 Jones, Philip Esq
 Jones, Miss Sylvia*
 Jones, W A Esq
 Jonzen, Mrs Karin

Joseph, Leslie Esq
 Joseph, Mrs S C*
 Juda, Mrs A
 Juda, H P Esq
 Julius, Mrs Muriel
 Kahn, Dr J H
 Kalman, Andras Esq
 Kaplan Gallery
 Kapp, Miss Helen
 Karmel, Mrs David
 Kasket, Mrs E
 Kauffmann, Mrs E
 Kay, Major E O
 Kaye, Mrs Joyce
 Kaye, Nicholas
 Keating, Geoffrey Esq
 Keay, Miss Anne*
 Kebbell, T R D Esq
 Kebbell, Mrs T R D
 Keightley, Miss Moy
 Keir, Mrs Cazaiet*
 Kell, D F Esq
 Kemp, R J Esq*
 Kemp, Mrs R J*
 Kempton, Mrs M E*
 Kendall, F P Esq*
 Kennedy, Mrs John
 Kennedy, W J Esq
 Kennett, Mrs E A OBE
 Kennett, F L Esq
 Kerman, Mrs B
 Kerridge, Dr Alison
 Kessell, Miss Mary
 Kilbane, Mrs Prunella
 Kilham-Roberts, Miss E
 Killery, Mrs V St J
 Kilmartin, T Esq
 King, Mrs V
 Kings, Mrs Anne
 King-Farlow, Denys Esq, MBE
 Kinley, Peter Esq
 Kinross, The Lord
 Kinsman, A H I Esq
 Kirkpatrick, Miss B J*
 Kirsopp, Miss Catherine

Kitson, Mrs. P A
 Klein, Miss Sylvia
 Kleinwort, Mrs C
 Klemantaski, Mrs V
 Knapp, Mrs Yvonne
 Kneale, Bryan Esq
 Kneebone, Peter Esq
 Knight, Esmond Esq*
 Knoedler, M & Co
 Knollys, Eardley Esq*
 Knowland, Mrs N H
 Knowland, Mrs W H I
 Kolsky, Mrs
 Koppel, Mrs S
 Korany, S Esq
 Kray, Dr Alfred
 Krol, Stan Esq
 Kromwell, O Esq

Labia, Count
 Lammin, James Esq
 Lammin, Mrs James
 Lancaster, Dr K J
 Landau, Mrs P
 Landells, Richard, P W, Esq
 Landells, Mrs Patricia
 Lane, Miss B K
 Langdon-Down, A T Esq*
 Lasdun, Denys, Esq FRIBA
 Las Gourgues, Mrs M
 Laski, Mrs Norman
 Laski, Philip Esq
 Laski, Mrs Sara
 Last, Mrs Marie
 Lawrence, E C Esq
 Lawrence, J Esq
 Lawrence-Smith, Miss J
 Laws, Frederick Esq
 Laws, Mrs F
 Lazzolo, V Esq
 Layton, Hon Mrs D
 Leach, Mrs Margaret
 Lean, Tangye Esq
 Le Bas, Edward ARA*
 Le Brocquy, Louis Esq
 Lebus, Lady

Lederman, Dr M*
 Ledger-Hill, Miss Cicely
 Lee, A E Esq
 Lee, Mrs Joy
 Lee, Mrs Mollie
 Lee, Mrs W
 Leeds, The Duchess of
 Lees-Milne, Mrs
 Lehmann, John F Esq
 Leigh, Mrs William
 Le Neve Foster, Peter Esq*
 Le Neve Foster, Mrs*
 Leon, His Hon, Judge H C*
 Leon, Mrs Barbara*
 Leon, Walter Esq
 Leonard, Mrs Claire
 Le Roy, Mrs J
 Leslie, Miss J
 Leverett, Mrs E M
 Levine, Mrs Beryl
 Levinson, F E H
 Levy, Miss Alix
 Levy, B W Esq
 Levy, Mrs George
 Levy, Percy R Esq
 Levy, Mrs P R
 Lewando, J A Esq
 Lewenhaupt, Count
 Lewin, B Esq
 Lewis, Dr E R C*
 Lewis, John & Co Ltd
 Lewis, Miss Marjorie
 Lewis, Miss Naomi
 Lewis, Mrs W
 Le Witt, Jan Esq
 Lewson, Dr S Charles*
 Lidderdale, Miss J H OBE
 Lilly, Miss Marjorie
 Lipscomb, Dr I M*
 Lipscomb, Mrs J
 Listowel, The Rt Hon The
 Earl of
 Listowell, Freda, Countess of
 Little, Miss Joyce
 Littleboy, R Esq
 Littman, A Esq

Littman, Mrs A
 Littman, Mark Esq* QC
 Lloyd, A H Esq
 Lloyd, Gilbert Esq
 Lloyd, Mrs K B
 Lloyd-Lowles, Lt-Col
 Lloyd-Williams, Dr K G
 Lockyer, Miss Mildred*
 Lomas, Mrs M E
 London International Press
 London Typographical
 Designers
 London University Senate
 House
 Long, Miss Kathleen
 Longworth, Miss Marian
 Carlton
 Longworth, Mrs Philip
 Loraine, P Esq
 Lotinga, G M Ltd
 Lousada, Anthony Esq*
 Loverock, Mrs J M
 Low, Mrs D
 Low, R V Esq
 Lowe, I H Esq
 Lowenstein, E Esq
 Lowman, Miss Patricia
 Loxton-Peacock, G H Esq
 Loxton-Peacock, Mrs G H
 Lucas, Miss A
 Lucas, The Hon Mrs A J
 Lucas, Miss Catherine
 Lucas, N B C Esq
 Lucas, Mrs N B C
 Lucas, Mrs S W
 Lucy, The Hon Mrs C P M
 Lucy, Lt. Comdr C P M
 Luddington, Miss L
 Lush, Christopher Esq
 Lusty, R Esq
 Lydall, E F Esq
 Lynham, Miss Ruth
 Lyons, Miss Effie*
 Lyons, F J Esq*
 Lyons, Miss G
 Madeley, Miss L E

Maeck, Mrs A
 Magnus, Mrs N
 Magyary, Miss J
 Maier, A J Esq
 Maile, Miss Edna
 Malburn, Miss May
 Malet, Guy Esq
 Mallinson, D Esq
 Manessei, Countess
 Mann, D J Esq
 Mann, Mrs D J
 Mann, Mrs Gitta
 Mann, Mrs Irene
 Mann, T O Esq
 Manners, Lady
 Manners, G S Esq
 Manson, Miss E D
 Marcus, Dr M
 Marcus, Mrs M
 Margulies, A E Esq
 Margulies, Mrs Miriam
 Margulies, William Esq
 Mariani, Miss R
 Marinho, Mrs Antonio
 Marks, Mrs A C
 Marks, Miss F
 Marks, Herbert Esq
 Marks, Mrs Jessie*
 Marsh, Dr Kenneth*
 Marsh, Mrs Kenneth*
 Martin, W A Esq
 Martin, Mrs O S
 Marx, S S Esq
 Mason, Bateson Esq
 Massada, Miss lone
 Massingberd-Mundy,
 Miss Anne
 Massingham, Mrs J E
 Masson, Lady Jean
 Matchett, Mrs John*
 Mathew, Robert, Esq
 Mathias, J M Esq
 Matthews, Peter Esq
 Matthews, Lady Vera
 Matthews, T S Esq
 Matthieson Gallery

Maude, E W Esq
 Maude, Mrs E W
 Maurice, Miss J
 Mautner, J Esq
 Maw, George F Esq
 Maw, Mrs G
 Mayall, Miss A
 Mayer, M Esq
 Maylor, T C Esq
 Mayor, F H Esq
 Meade, Mrs C J G
 Mearns, Mrs Bertha
 Medlicott, E S D Esq*
 Melchett, The Lady
 Melchett, Gwen Lady
 Meliegan, Mrs E J
 Melland, Brian Esq
 Mellior Smith Mrs M M
 Melvin, James Esq
 Melvin, John Esq
 Mengny, Mrs M E
 Menut, Miss Noella
 Metaxa, Mrs A
 Meyer, Mrs Fleur Cowles*
 Meyer, Dr H H
 Meyer, Peter Esq*
 Meyerhoff, Richard Esq
 Meynell, Miss Rosemary
 Meyrick, Mrs J
 Michael, Lt Col Louis OBE
 Middleton, Mrs
 Millard, Lionel Esq
 Miller-Jones, K Esq
 Millett, Mrs P
 Millman, Mrs E
 Millward, Alfred Esq
 Milner-White, Rev E
 Milnes-Lewis, Mrs Elizabeth
 Mines, Kenneth Esq*
 Mines, Mrs K
 Mines, Miss
 Minto-Wilson, H Esq
 Mintz, M Esq
 Mitchell, G A Esq
 Mitchell, W S Esq
 Mitton, P D Esq

Mitton, Mrs R E R
 Moffat, Mrs Curtis
 Molesworth, Mrs E
 Mollo, Mrs E C
 Mollo, Eugene Esq
 Molony, Will Esq
 Monahan, Frank Esq
 Moncur, Miss B*
 Money-Coutts, The Hon Hugo
 Monro, Mrs D M
 Montagu, The Lady Elizabeth
 Moody, Ronald Esq
 Moore, Dickin Esq
 Moore, Henry Esq CH
 Moore, M St Aubyn Esq
 Moore, Mrs St Aubyn
 Moore, Mrs P
 Moore, R H Esq
 Moore Crosthwaite, P Esq
 Moorehead, David Esq
 Moorehead, Mrs M H
 Morand, S Esq
 Moray, Countess of
 Mordaunt, Mrs Charles
 Moresby, Mrs Beatrice
 Morison, P H Esq
 Morland, Mrs Dorothy
 Morley, Mrs J R
 Morny, C Esq
 Moores, E M Esq
 Morris, Miss*
 Morris, Clive, Esq
 Morris, Mrs A J
 Morris, Dennis Esq
 Morris, Edward Esq
 Morris, Dr David
 Morris, The Lord
 Morris, John Esq
 Morris, Dr Michael
 Morrison, Mrs H*
 Morrison, Simon Esq
 Morrison, Ian Esq
 Mortimer, Raymond Esq CBE
 Moser, Charles Esq
 Moss, Miss Susan
 Mott, Tom Esq

Moyne, The Rt Hon Lord
 Moyse, Arthur E Esq
 Muecke, Mrs Jean
 Muende, Miss Toni
 Muller, Mrs M N
 Mullins, Mrs E G
 Murdoch, Miss E
 Murray, Mrs M
 Murrie, Sir William Stuart*
 KBE, CB
 Murphy, Miss K M
 Murton, R J Esq
 Musgrave, Victor Esq
 Muszynski, L T Esq
 Macalpine, Mrs
 Mac Carthy, Mrs
 Mac Donald, Miss Anne
 Mac Donald, Keith M Esq*
 Mac Donald, Mrs K M
 Mac Farlane, Miss R H
 Mac Gregor, Mrs C P
 Mackechnie, R G S Esq
 Mackenzie, G L W Esq
 Mackinlay, Miss C
 Mackinnon, The Hon Mrs
 Mackintosh, Mrs Hugh
 Mackintosh, James Esq
 MacIachlan, Malcom Esq
 MacIaren, A A Esq
 Maclean Miss Kathleen
 Macleod, Mrs Douglas
 Macquitty, William Esq
 Macroberts, Lt Col N de P
 DSO, MC
 Mc Alister, Mrs Ronald
 Mc Callan, E C D Esq
 Mc Callin Miss Joan
 Mc Claughry, Mrs A
 Mc Coy, Mrs Caroline
 Mc Crirrick, Miss Sheila
 Mc Culloch, Mrs Laurita
 Mc Culloch, M C Esq
 Mc Dermott, Mrs M
 Mc Donald, Miss G M
 Mc Donnell, Lt Col A J L
 Mc Douall, Robin Esq

Mc Kenzie Mrs N
 Mc Kinsty, Robert Esq
 Mc Laren, Mrs S
 Mc Leod, Miss M
 Mc Leod, Susan Lady
 Mc Neill Moss, Gilbert Esq*
 Mc Neill Moss, Mrs G*
 Mc Neill-Reid, A J Esq
 Mc William, F E Esq
 Mc Wurter, Mrs Ishbel
 Naar, Mrs G E
 Nadin, Mrs
 Naftalin, Dr J E
 Naish, S Esq
 Naish, Mrs S
 Nan Kivell, Rex de C Esq
 Nathan, Jerrold S Esq
 Nawiasky, Mrs Thirlby
 Naydler, Mrs Elizabeth
 Naydler, Merton Esq
 Neal, Mrs L
 Neilson, Mrs Charles
 Nelke, Mrs
 Nessler, Walter H Esq
 Nettleton, Gordon Esq
 Neven du Mont, M Esq FRSA
 Newbury, G C Esq
 Newby, E Esq
 Newby, Miss M
 Newman, L Caselton Esq
 Newmark, Mrs J
 Newton, Eric Esq*
 Newton, Mrs Eric
 Newton, John M Esq
 Newton, Mrs Pamela F
 Nicholls, Clive Esq
 Nicholls, Mrs Clive
 Nicholls, Colin Esq
 Nicoll, J S Esq
 Nicholson, J L Esq*
 Nickalls, G O Esq
 Nigam, Mrs G
 Nightingale, H W Esq*
 Noordhof, Mrs George
 Norman, Mrs A U B

Norfolk Contemporary Art
 Society
 Norris, Christopher Esq
 Norris, K R Esq*
 Norris, Mrs K R*
 Norton, Lady*
 Norton, Mrs E Lucy*
 Notman, J Robertson Esq
 Nowell-Smith, Simon Esq
 Nowik Henry Esq
 Nunnerley, Mrs
 Nunnerley, Miss Leslie
 Offord, Mrs D E
 Ogden, Mrs E M
 Ogden, R David Esq*
 Ogilvie, Lawrence Esq*
 Ogle, R J Esq
 O'Hanna, J Esq
 Oldfield, Lady Elizabeth
 O'Neil, Miss Mary*
 O'Neill Anthony Esq
 Oppe, Miss Armide*
 Oppenheim, Sir Duncan
 Oppenheim, Miss Mary
 Oppenheimer, P F Esq
 Oppenheimer, Mrs P F
 Orde, Cuthbert Esq
 Orde, Mrs Cuthbert
 Ormerod, R E Esq
 Ormsby, Miss Elizabeth
 Osborne, John L Esq
 Osborne, Mrs June
 Osman, Louis Esq*
 Osman, W A Esq*
 Otway-Smithers, Mrs P
 Owen, Mrs F
 Page, Mrs Tom
 Paget Cooke, Mrs
 Pain Richard H Esq
 Paine, Clifford Esq
 Paine, Miss Ula
 Pakes, J M Esq
 Palmer, The Hon A N
 Palmer, J W Esq

Palmer, M A Esq
 Palmer, M J B Esq*
 Paniguan, Mrs Mary
 Panting, Anthony Esq
 Panting, Mrs A
 Parker, Mrs Charles
 Parker, C G Esq
 Parker, Mrs Oliver*
 Parker, Miss V M
 Parkin, B T Esq*
 Parmiter, G de C Esq
 Parmiter, Mrs G de C
 Parry, Mrs B B
 Paterson, Miss G
 Paton, E G Esq*
 Patterson, Charles Esq
 DSO, DFC
 Pattrick, Mrs M
 Paule, John Esq
 Pavay, D A Esq
 Pawluk, Mrs V*
 Payne, Mrs Dorothy
 Payne, Mrs L
 Peacock, Miss M
 Pearce, C Maresco Esq*
 Pearce, J Ricardo Esq
 Pearce, J A C Esq*
 Pearce, O D Esq
 Pearce, Miss Stella Mary
 Pearman, Dr F H
 Pears, Peter Esq
 Pearson, Mrs E
 Pease, Mrs F D D
 Pemberton Reece Esq
 Pemberton Wright,
 James Esq
 Pemberton Wright, W Esq
 Penn, John Esq
 Penny, A J R Esq
 Penny, Miss E
 Penrose, Miss F E
 Penrose, Roland Esq
 Pentland, Miss
 Pepperell, J C Esq
 Perelman, J Esq
 Permewan, Mrs S

Peters, A Esq*
 Peters, Mrs Eric
 Peters, F Esq
 Peters, H G W Esq*
 Petrovitch, Dr Milorad
 Phelan, A J Esq
 Philipps, Mrs Hugo
 Philipps, Mrs Percy
 Philipps, Hon Hanning
 Phillips, Mrs D
 Phillips, Ian Esq*
 Phillips, Pat Esq*
 Phillips, Mrs Phyllis
 Phillips, Rodney G Esq*
 Phillips, Mrs T A
 Pick, Sydney J Esq
 Pickering, Lady
 Pickering, Mrs Nellie
 Pickering, P F de S Esq
 Pickering, Mrs M L
 Pierce, Miss Ethel
 Pilbeam, Miss Nova*
 Pilkington, Miss Margaret
 Pilkington, R G Esq*
 Pilkington Mrs R G*
 Pinkney, Mrs N M*
 Pitman, Hugo Esq
 Platt, M E A Esq
 Plesch, Mrs E
 Plymouth, The Rt Hon
 the Earl of
 Poland, Lt Comdr R B*
 Poland, Mrs
 Poliakoff, Arthur Esq
 Pollak, F Esq
 Pollak, Mrs G
 Pollak, Mrs Stefa
 Pollard, R S W Esq
 Pollard, Mrs
 Pollock, P S Esq
 Pollock, Mrs Venetia
 Ponting, K G Esq
 Pool, Mrs E M
 Popham, Miss Anne
 Porter, Mrs Elsie
 Potter, Mrs Mary*

Potter, Stephen*
 Potter, Mrs. Stephen*
 Poupart, Mrs B*
 Powell, Mrs
 Powell, Lt Comdr
 Powell, Col G S
 Power, E J Esq
 Prager, Mrs
 Prendergast, Mrs
 Preston, Kerrison Esq
 Preston, Mrs.
 Price, Mrs A J
 Price, Mrs C
 Price, D L H Esq
 Price, Mrs J M E
 Pride, Eric Esq
 Primrose, Miss N
 Pritchard, J C Esq*
 Pritchard, Lt Col R C*
 Proctor, Sir Denis KCB*
 Proctor, Lady*
 Prosser, Colin M Esq
 Prynn, J H Esq
 Pugh, Mrs K J
 Pugh, Miss M A
 Purves, A M Esq
 Putnam, Eric Esq
 Putnam, Miss Mary

Quin, Miss D P

Rabinovitch, Mrs C
 Radcliffe, The Rt Hon
 the Lord GBE, QC
 Radcliffe, Mrs R A C
 Radin, Michael, Esq
 Radin, Mrs Michael
 Radin, Murray, Esq
 Radin, Mrs Murray
 Raikes, Mrs G
 Raikes, J C Esq
 Raikes, Mrs J C
 Rake, Dr John S*
 Rakocki, Basil Esq
 Ramsay, M D Esq

Ramsay, Lady Patricia
 Ramsay-Cohn, A M Esq
 Ramsden, Mrs Mary
 Randal, Mrs G
 Rankin, Mrs S
 Raphael, Mrs Nancy*
 Rathbone, Miss I
 Raybould, Dr E M
 Reading, J Esq
 Redman, Miss Marjorie
 Redwood-White, O J Esq
 Redwood-White, Mrs M
 Reed, Miss E
 Reed, Vernon T Esq
 Reid Gallery The
 Reid, Norman Esq*
 Reilly, Mrs Paul
 Reiss, Francis E Esq*
 Reiss, J Esq
 Remak, Miss Fanny
 Rennie, H M Esq
 Rennie, Mrs V M
 Renton, Mrs R K D
 Revai, Dr A
 Reynish, Mrs M P
 Reynolds, Alan Esq
 Reynolds, Mrs Alan
 Reynolds, Graham Esq
 Reynolds, Mrs G
 Rhodes, Mrs E
 Rhodes, Mrs Monica
 Rhodes, Miss Patricia
 Richards, J M Esq
 Richards, John Esq
 Richards, Mrs M A
 Richardson, Barry Esq*
 Richardson, Miss K R
 OBE, RA
 Richardson, Mrs S
 Richmond, Sir Arthur CBE
 Richmond, Lady
 Richter, F Esq CBE, MA
 Ridgeway, T G Esq
 Ripzani, H Esq
 Ripzani, Mrs
 Ritter, L Esq

Riviere, A O B Esq
 Riviere, Mrs A O B
 Rivlin, Dr S*
 Roberts, A S Esq*
 Roberts, Beaver Esq
 Robertson, Mrs Alice
 Robertson, Bryan Esq
 Robertson, Lady
 Robertson, E M L Esq
 Robertson, Mrs E M L
 Robertson, Mrs E S
 Robertson, Mrs Struan
 Robin, Angus Esq
 Robinson, Miss Bay
 Robinson, Miss Helen
 Robinson, Professor K E*
 Robinson, Mrs Stanley
 Roboz, Miss Z
 Robson, Dame Flora OBE
 Rock, David Esq*
 Rochford, Mrs L
 Rodd, Mrs C M*
 Roddon, Guy Esq
 Rogers, Mrs Elsie
 Rogers, Miss Helen
 Roland Browne and
 Delbanco
 Roll, Eric Esq
 Roll, Mrs W
 Rolt, David Esq
 Romain, Michael Esq
 Romeril, Mrs J
 Romilly, The Rt Hon The Lord
 Ronald, Miss Catherine
 Ronksley, L A Esq
 Rooke, Mrs Noel
 Roome, Mrs Lilian
 Roper, Mrs P
 Roscoe, S Esq
 Rose, Mrs E*
 Rose, Geoffrey Esq
 Rose, H H Esq*
 Rose, H W Esq*
 Rose, Mrs J E
 Rose, R Esq
 Rose, Mrs R

Rose, Miss T*
 Rosen, J Esq*
 Rosen, Mrs D Nachsen
 Rosenberg, Eugene Esq
 Rosenfield, Mrs H M G
 Rosenkranz, Dr Alfred
 Roskill, Mrs Ashton
 Roskill, A W Esq
 Roskill, Mark W Esq
 Roskill, Oliver Esq
 Roskill, Mrs S
 Rosner, D Esq
 Rosner, M H Esq
 Ross, Alan Esq
 Ross, A E Esq
 Ross, Mrs A E
 Ross-Wills, Miss E
 Rothenstein, Sir John CBE
 Rothenstein, Michael Esq
 Rotherham, Mrs
 Rothman, Mrs
 Rowell, Miss Elizabeth
 Rowlands, Miss Ida
 Rowntree, Mrs Peter
 Rubens, Alfred Esq
 Rubens, Mrs A
 Rubenstein, A B J S Esq
 Rubinstein, Mrs Ann L
 Rubinstein, M B Esq*
 Rubinstein, Mrs M B
 Rudd, Mrs E M
 Rueff, Mrs F M*
 Rueff, J M Esq*
 Runnette, J E Esq
 Rushworth-Lund, Mrs V
 Russell, Martin Esq
 Russell, Mrs
 Russell, Mrs Ronald
 Russell, Sheridan Esq*
 Russell, Mrs Sheridan
 Russell-Cobb, T Esq*
 Russell-Cobb, Mrs T*
 Ryder, Hugh Esq

 Sabatini, Miss Diana
 Sacher, Mrs H

Sackville-West, The Hon E C	Schweppe, Miss Sylvia	Sieff, J E Esq	Solomon, Mrs Ethel	Stern, Miss E S
Sadler, W R Esq*	Scott, Capt Sir David	Sieff, Mrs J E	Solomons, Mrs G*	Stewart-Murrie, Sir William
Sainsbury, Alan Esq	KCMG, OBE	Sieff, Michael D Esq	Somervell, The Rt Hon Lord	Stirgess, Lionel Esq*
Sainsbury, Mrs Alan	Scott, Lady	Sieff, Mrs M D	Justice, of Harrow	Stockdale, Miss A L
Sainsbury, Mrs Doreen Davan	Scott, Miss M	Sielle, Robert Esq	Somervell, R Esq*	Stockdale, Norman Esq
Sainsbury, J D Esq*	Scott, Mrs Olga	Silsby, Peter Esq	Somerville, Mrs Lilian	Stockham, Peter Esq
Sainsbury, R J Esq*	Scott, Sir Oliver	Siltzer, Mrs M S	Sonneborn, R F J Esq	Stoddard, G Esq
Sainsbury, Mrs R J*	Scott-Kilvert, Mrs I S	Silver, C J Esq	Sonnis, Mrs I	Stoller, Ivan Esq
Salaman, Mrs G	Scudamore, Miss C	Silver, Henry Esq	Sorsbie, M Esq	Stoltenhoff, Mrs R
Salmon, Julian Esq	Scudamore, Hugh Esq	Simmons, Miss Caroline	Southall, Eric P Esq	Stone, Jonathan Esq
Salmon, Mrs Julian	Searcy, Philip Esq	Simon, R M Esq*	Spalding, Miss Anne	Stone, Mrs M C
Salpeter, M Esq	Seaton-Reid, Mrs Vera	Simon, Mrs R M*	Speelman, E Esq	Stopford, Mrs V*
Salter, Mrs C	Sebba S Esq	Simond, Mrs M A	Speke, Mrs R L	Storey, M H W Esq
Sample, Miss M A	Seilern, Count Antoine*	Simoni, Miss Anna MA	Spence, Miss Susan	Stowell, R E Esq
Sampson, Mrs Phyllis	Seligman, Mrs B Z*	Simons, Miss H	Spencer, Charles S Esq	Strachey, Mrs I
Samson, Mrs Julia	Seligman, Mrs Hugh	Simpson, Mrs Anne	Spencer, Mrs M U	Straight, Whitney Esq CBE
Samson, Dr O W	Selzer, Mrs A	Simpson, Dr S L	Sperry, P Martin Esq	MC, DFC
Samuel, Howard Esq	Selzer, Leon Esq	Simpson, Mrs S L	Speyer, Mrs F C O	Strathcona, Lady
Samuel, Mrs H	Sempill, Lady	Sinclair, Miss Catherine	Speyer, F C O Esq	Strauss, Mrs G R*
Samuel, Hon PM, MC	Severne, Mrs C M	Siva, S Esq	Spicer, Mrs P	Strauss, Julius Esq
Samuels, Mrs R	Seward, Miss Marjorie	Skinner, F S Esq	Spiers, Alan Esq	Strauss, K Esq
Samuels, S Esq	Shahed, S Esq	Skottowe, P F Esq	Spira, Mrs J J	Strecker, Mrs Joan
Sander, Ernest Esq*	Shanks, Dr Jean	Skrine, I B Esq	Spiro, Robin Esq	Street, Mrs W G
Sander, Mrs Ernest	Sharpe, Mrs E	Slatter, Miss W*	Spivack, H Esq	Strudwick, Philip Esq
Sanderson, Miss M	Sharpe, Mrs Nigel	Slesinger, Mrs Lilian	Spooner, Mrs J A	Stucley, Peter Esq
Sands, Miss H M	Shaw, D R Esq	Slotover, Dr M	Sprigge, Miss Elizabeth	Sturge, Mrs Anne W
Sandwich, The Rt Hon the	Shaw, Mrs E Sybil	Sluzewski, Dr C	Spry, Mrs B	Sturges, Lady
Countess	Shaw, J F Esq	Sluzewski, Mrs C	Sputz, Mrs F	Sturgis, Miss E B*
Sandys, The Rt Hon	Shaw, Mrs Marcelli	Smale, Miss C	Stafford, Capt J	Sturt, A N Esq*
Duncan MP	Shaw, Miss M A	Smallpiece, Dr Victoria	Stainthorpe, Miss A	Sturton, Herbert J C Esq
Sang, Dr Janet	Shaw, Miss M F*	Smith, Miss Abel	Stainforth, Miss S*	Suckling, Mrs W
Sankey, J V Esq	Shaw-Taylor, Desmond Esq	Smith, A J Hugh Esq MC FSA	Stamler, David Esq	Suckling, W Esq
Sassoon, Mrs Meyer	Shawzin, Mrs	Smith, Basil W Esq	Standfield, Miss Rose	Suddards, Roger W Esq*
Saunders, Miss Andree J	Shearn, M Esq	Smith, Miss Cicely	Stanley, Miss Jane	Summerfield, Miss D J
Saunders, J P Esq*	Shelton, Stanhope Esq	Smith, Mrs E J	Stanning, Ellis Esq	Summers, A M Esq
Savage, Robert, Esq	Shelton, Mrs Stanhope	Smith, Mrs Hilda A Malcolm	St Aubyn, The Hon John	Summerscale, Lady
Savitt, Edwin, Esq	Shepherd, Miss H M	Smith, The Hon James OBE	Stead, Keith Esq*	Sumpter, Miss C B S
Scaramanga, G J Esq	Sherratt, Mrs D A	Smith, Miss Lesley	Stead, Mrs K C	Susskind, Mrs Willi
Scarlett, Frank Esq	Shire, Dr Hugh	Smith, Mrs Phyllis	Stead, Peter Esq	Sutherland, Miss H
Scarlett, Mrs F	Shirley, Mrs Phyllis	Smith, R D Esq	Steel, Richard Esq	Sutherland, R M G Esq
Schick, Mrs Alice	Shone, Sir Robert CBE	Smith, Mrs W F	Steen, S N Esq*	Sutherland, T W Esq*
Schiff, Mrs E H	Short, Miss Dudley	Snipper, Mrs L	Steen, Mrs S N	Sutton, Denys Esq
Schleyer-Saunders, E Esq	Shrive, Miss Margaret	Snow, Mrs C M	Steiner, K H L Esq*	Sutton, Ivan Esq
Schloessing-Paul, Mrs E	Shulman, Milton Esq*	Snow, Mrs Julian	Steiner, Mrs K H L	Sutton, Mrs Ivan
Schorr, Miss Claire	Sidgewick, Miss Ann	Snowman, Kenneth Esq	Stenson, Mrs J	Sutton, J R Esq
Schreiber, Mrs Gaby	Sieff, I M Esq	Sober, P Esq	Stern, Mrs Ellen D	Sutton, Dr R N P

Sutton, Mrs Sara
 Swan, Dr Marcella MB
 Swann, Mrs H B
 Swithinbank, Dr John
 Sykes, Brigadier A C CB DSO
 Sykes, Lady
 Symes, Miss Mary C
 Symons, Dr Cecil
 Symons, Mrs Cecil

Tabor, Miss Lucy
 Talbot-Rice, D Esq
 Talbot-Rice, D M Esq*
 Tandy, John Esq
 Tarran, Capt J A
 Tate, Mrs Patricia
 Tattersall, W D Esq*
 Tattersall-Wright, J W Esq
 Taylor, Mrs Elizabeth
 Taylor, Gordon Esq
 Taylor, G L Esq
 Taylor, R H R Esq
 Teece, A H Esq
 Temple, R C C Esq
 Tennant, Trevor Esq
 Thieman, H R Esq
 Thomas, Mrs G F
 Thomas, Mrs I
 Thompson, Arthur Esq*
 Thompson, Mrs F M*
 Thompson, Mrs Harry
 Thompson, Miss Joyce
 Thompson, Mrs S M
 Thomson, Stuart Esq*
 Thomson, Mrs Stuart*
 Thomson, Miss Sophie
 Thorn-Drury, Miss Silvia
 Thorne, Barrie Esq
 Thornton-Firkin, Mrs J
 Thrupp, Col C G D*
 Thrupp, Mrs C G D
 Thurso, The Rt Hon Viscount
 Thurston, C C D Esq
 Thusek, Mrs
 Thwaites, Mrs Mollie
 Tiedman, Seaton Esq

Tilley, Mrs P
 Tillotson, John Esq
 Tilney-Bassett, H G Esq
 Tinsley, M H Esq
 Tisdall, Hans Esq
 Tite, A G Esq
 Todd, Miss Frances A
 Tollenaar, Miss Norah
 Tomalin, H R Esq
 Tomalin, Mrs H R
 Tomkinson, Dr J S
 Tomlins, B D Esq
 Tomlins, Mrs Barbara
 Tooth, Anthony Esq
 Tooth, Arthur and Sons Ltd
 Tooth, Guy Esq*
 Topham, P Esq
 Torin, Mrs Marion
 Toseland, Peter Esq
 Towers, G L Esq
 Townsend, Miss Janet
 Townsend, William Esq
 Townshend, Miss Mary
 Towsey, Mrs E N
 Travers-Smith, Miss Dorothea
 Troughin-James, Dr R N
 Troy, Miss J D
 Tucker, Geoffrey Esq*
 Tucker, Mrs Isabella
 Tuckman, Dr E
 Tugendhat, A Esq
 Tugendhat, Mrs A
 Tunnard, P H Esq
 Turnell, Martin Esq
 Turner, Miss A
 Turner, A F C Esq
 Turney, Miss Olive
 Turquet, Mrs C
 Twentyman, A R Esq
 Twentymann, J A Esq
 Twist, Anthony Esq
 Twiston-Davies, J H Esq*
 Tyrell Lewis, Miss D
 Tyrwhitt, Mrs Ursula
 Upshall, Mrs

Ury, Mrs H
 Valmadis, Mrs R
 Van den Bergh, S Esq
 Van den Bergh, Mrs S
 Van der Meulen, Mrs L
 Vaughan, Keith Esq
 Vaughan-Morgan, Sir John
 MP
 Vaughan-Morgan, Lady
 Venables, I Roger Esq*
 Venus, Miss V
 Verney, John Esq
 Vernon, Edmund J Esq
 Vernon, Mrs Elizabeth
 Verschoye, Mrs Moyra
 Vickers, J Esq
 Villet, Henry Esq
 Villiers, Capt E H
 Vincent, Mrs P
 Vogelpoel, Mrs Yvonne
 Von Hofmannsthal, R Esq
 Vousden, Miss M E
 Waddington Gallery*
 Waddoup, Mrs
 Wade, Mrs Beryl
 Wade, S W Esq
 Wagstaff, Mrs A M
 Wakefield, Peter L H Esq*
 Wakeman-Long, Francis Esq*
 Wakeman-Long, Mrs E M*
 Walber, R D Esq
 Walford, R A Esq
 Walker, R J B Esq
 Walker, Mrs Susan
 Wallace, Mrs H
 Wallis, Jack Esq
 Wallis, Mrs P M
 Walmsley, Mrs Margot
 Walsh, P B Esq
 Walter, Miss A
 Walthall, Miss Daphne
 Walton, Major G N
 Warburg, Mrs Elinor
 Warburg, George Esq

Warburg, Mrs L
 Ward, Alan Esq*
 Ward, Mrs E
 Ward, Mrs E Madeleine
 Ward-Jackson, Peter W Esq*
 Ware, W E Esq*
 Waring, Dr David
 Warner, Miss Daphne
 Warner, Oliver Esq
 Warwick, R D Esq*
 Wates, Miss Susan
 Watney, Dr B M BA
 Watney, Mrs John
 Watt, Miss Elizabeth
 Watt, M J Esq
 Watt, Mrs Maurice
 Watts, Mrs E H
 Wayne, Dr Norman Douglas
 Weaire, R F Esq
 Weaver, Mrs Alla
 Webb, A L Esq
 Webber, Mrs D
 Webster, Mrs D
 Webster, Mrs Jean
 Webster, Mrs J
 Webster, T B L Esq
 Weddoup, Mrs V M
 Wedell, E C Esq
 Weidenfeld, George Esq
 Weil, Miss Hanna
 Weiser, J Esq
 Weiser, Mrs J
 Wellesley, Richard Esq
 Wells, Alfred W Esq
 Wellsford, Miss R M*
 Wentworth, John M Esq
 Wertheim, Mrs Lucy
 West, Mrs Katherine
 West, Lady
 Weston, Mrs Joan
 Whineray, B Esq
 Whitaker, Ben Esq
 White, Miss Helen
 White, Lt Col Peter*
 White, Mrs Peter*
 White, S D Esq

White, J Trevor Esq
 MSIA FRSA
 Whiteaway, Michael Esq
 Whiteaway, Mrs Rose
 Whitehead, Miss Mavis
 Whitehead, Sir Rowland Bt
 Whiteley, Mrs E R
 Whiting, Mrs B
 Whiteley, Lady*
 Whitman-Smith, A Esq
 Whyte, L L Esq
 Whyte, Mrs Eve
 Widdicombe, D Esq
 Widdicombe, Mrs D
 Wickham, G Esq
 Widdup, Dr H P*
 Wilberforce, Richard Esq
 Wilby, J A Esq
 Wilby, Mrs J A
 Wilby, W S Esq
 Wild, Hans Esq*
 Wilkin, Miss G H
 Wilkins, M H F Esq
 Wilkinson, Mrs M D
 Wilkinson, Dr V A
 Williams, Mrs A F
 Williams, Charles Esq*
 Williams, Mrs Charles*
 Williams, D R H Esq
 Williams, Mrs D
 Williams, E R Esq
 Williams, Mrs Hilary
 Williams, Miss Joan
 Williams, Mrs Joan*
 Williams, Dr T R
 Williamson Miss Elizabeth
 Willis, Mrs Ramsay
 Willison, Denis Esq
 Willison, Mrs Sheila
 Willmott, Mrs T H
 Wilmot of Selveston,
 The Rt Hon Lord PC JP
 Wilmot-Wilkinson, R Esq
 Wilshire, Miss Anne
 Wilson, Miss Audrey L*
 Wilson, Charles Esq

Wilson, Frank Avray Esq*
 Wilson, J W Esq
 Wilson, H Minto Esq
 Wilson, T M Esq
 Wilson, Mrs T M
 Wilson, Mrs V C*
 Wimbush, Mrs V M
 Winand, Francis M Esq
 Winand, Mrs F M
 Winch, Brian Esq
 Wingate, Mrs B
 Wingfield-Digby, G F Esq
 Wingfield-Digby, Mrs G F
 Winkler, Dr John
 Winn, Godfrey, Esq
 Winner, George, Esq
 Winstedt, Lady
 Wisdom, Mrs I
 Withers, Noel Esq
 Withers, Mrs Noel
 Witt, John Esq*
 Wittmann, Mrs Ernest
 Wolfe, Edward Esq
 Wolff, Eric Esq*
 Wolff, Mrs Friedel*
 Wolff, Dr Walther
 Wood, Kenneth Esq
 Wood, Mrs Kenneth
 Wood, Roger Esq*
 Woodall, Miss Mary
 Woodcock, Tyson Esq*
 Woodcock, Mrs Tyson*
 Woodhead, Dr Barbara*
 Woods, W L Esq
 Woolf, Miss S*
 Worboys, Sir Walter*
 Worsley, L E F Esq
 Worsthorne, Mrs P G
 Worthy, W Esq*
 Wrigglesworth, Ian W Esq
 Wright, Mrs Adela
 Wright, Basil Esq
 Wright, John K Esq
 Wright, Mrs John
 Wyatt, A H Esq
 Wyatt, Lady Moorea

Wyatt, Woodrow Esq
 Wyllie, Mrs Diana
 Wyllie, T R Esq
 Wyner, Mrs Anna
 Wynn, Dr Marianne

 Yardley, Miss Margaret
 Yates, Brian Esq
 Yates, Miss Joan*
 Yeoman, Mrs Antonia
 Yeoman, J R H Esq
 Yorke Baker, L Esq
 Yorke Baker, Mrs
 Yorke, Miss A M
 Young, Miss M G
 Younger, C Esq
 Younger, The Hon Mrs K
 Youngman, Mrs L
 Yudkin, Mrs Cicely
 Yudkin, Mrs J

 Ziegler, Archibald, Esq
 Zwemmer, D A Esq*
 Zwingli, Mrs L

* Denotes members who
 have signed
 a Deed of Covenant.

The advantages of signing a Banker's Order

For you:

You do not have to send your subscription each year – your bank does it for you. You do not risk failing to get invitations to parties because your subscription is overdue.

For us:

We get your subscription promptly which may avoid our paying overdraft charges. We save the time, trouble and expense of sending you a reminder.

What is a Deed of Covenant?

It is only a formal promise to pay your subscription for the next seven years. But it means we can get back almost as much again in tax from the Government.

Please complete both if you have not already done so ➡

Deed of Covenant

I
of
hereby covenant with the Honorary Treasurer of the Contemporary Art Society, that I will during the term of seven years from

.....
or during my life (whichever period shall be shorter) pay to the said Society each year such a sum as will after deduction of Income Tax at the current rate amount to the sum of

.....
from my general fund of taxed income so that I shall receive no personal or private benefit from the said annual payments.
In witness whereof I have hereunto set my hand and seal this

..... day of
one thousand nine hundred and sixty.....
.....

Signed, sealed and delivered by the above-named in the presence of

Name

Address

Occupation

Signature

Name

Address

Occupation

Signature

Order to Bankers

Contemporary Art Society

Date

Bankers

Branch
Please place to the credit of The Contemporary Art Society at Coutts and Co, 440 Strand, WC2 on receipt of this order and on the same date in each year the sum of

..... (£ : :)

2d Stamp

Signature

Name
Clearly written in capitals and stating whether Mr, Mrs or Miss)

Address

This order should be sent to the Organising Secretary, CAS, The Tate Gallery, London SW1

The Contemporary Art Society Revenue Account for the year ended 31 December 1960

1959		£	s	d	£	s	d	1959		£	s	d
3032	Purchases and Grant in Aid to Gallery				2894	18	0		Subscriptions (Including estimated Refund of Income Tax on Deeds of Covenant)	4411	14	0
	Expenses:							4065				
950	Salaries and Expenses	1024	7	0				200	Bequests and Donations	394	8	7
100	Typographer's Fees	150	0	0				278	Interest on Investments and Deposit Accounts (Gross)	296	1	11
	Printing and Postage of Annual Report							104	Sale of Tickets for Parties and Visits, less Expenses	715	11	1
342	and Accounts	457	12	3				461	Surplus on Exhibitions	—		
719	Miscellaneous	473	4	11				35	Deficit for year	—		
					2105	4	2					
	Expenses, less sale of catalogues and hiring fees of 'The First Fifty Years' Exhibition				105	19	5					
—	Surplus for year				711	14	0					
£5143					£5817	15	7	£5143				
										£5817	15	7

The Contemporary Art Society Balance Sheet 31 December 1960

1959		£	s	d	1959		£	s	d	£	s	d
	Accumulated Fund					Current Assets						
7244	Balance at 1 January, 1960	6861	10	9		Investments at cost						
-35	Add Surplus per Revenue Account	711	14	0	2881	£2884 1 6 3½% War Stock				2881	17	6
18	Premium on repayment of Defence Bonds	—				£2000 0 0 Hertfordshire County Council						
					1994	5¼% Stock 1965				1994	3	0
7227		7573	4	9		£1,200 0 0 Swansea 3½% Redeemable						
366	Less Transfer to Investment Provision Account	300	0	0	986	Stock 1960/70				985	14	0
6861		7273	4	9	5861					5861	14	6
892	Creditors	1573	16	8	1000	Less Investment Provision Account				1300	0	0
	Note: No value has been included in the Balance Sheet for Pictures, etc., purchased by or presented to the Society and temporarily retained pending presentation to Art Galleries etc.				4861					4561	14	6
						(Market Value £4,606 – 1959 £4929)						
					500	Deposit at Interest:—						
						Bowmakers Ltd.				500	0	0
					685	Cash at Bank						
					500	On Current Account	1538	4	10			
						On Deposit Account	1250	0	0			
					1	Cash in Hand				2788	4	10
	Anthony Lousada					Debtors				19	18	2
	Peter Meyer					Outstanding Subscriptions and estimated						
	Members of the Committee				759	Income Tax recoverable on subscriptions	607	8	11			
					447	Sundry	369	15	0			
										977	3	11
£7753					£8847	1	5	£7753				£8847 1 5

Report of the Auditors to the members of the Contemporary Art Society

We have examined the foregoing Balance Sheet and Revenue Account and have obtained all the information and explanations which we considered necessary. In our opinion proper books of account have been kept by the Society and the Balance Sheet and Revenue Account, which are in agreement therewith, comply with the Companies Act, 1948, and respectively give a true and fair view of the state of the Society's affairs at 31 December, 1960, and of the surplus for the year ended on that date.

Chesterfield House,
26/28, Fenchurch Street, London, EC3
9th November 1961

Gerard van de Linde & Son
Chartered Accountants

The Contemporary Art Society Revenue Account for the year ended 31 December 1961

1960		£ s d	1960		£ s d
2895	Purchases		2500	0	0
	Expenses:				
	Salaries, Allowance and National Insurance Contributions	1229 1 0	4412		
1072			394		
216	Printing, Stationery, Postage and Telephone	312 9 6			
533	Estimated cost of Annual Report	350 0 0	296		
284	Miscellaneous	277 4 9			
			716		
		2,168 15 3			
	Expenses, less sale of catalogues, of 'Recent Acquisitions' Exhibition	69 3 9			
	Less: 1960 Expenses recovered on 'The First Fifty Years' Exhibition	63 4 0			
106					
712	Surplus for year	5 19 9			
		738 10 8			
£5818		£5413 5 8	£5818		£5413 5 8

The Contemporary Art Society Balance Sheet 31 December 1961

[illegible]

Report of the Auditors to the members of the Contemporary Art Society

We have examined the foregoing Balance Sheet and Revenue Account and have obtained all the information and explanations which we considered necessary. In our opinion proper books of account have been kept by the Society and the Balance Sheet and Revenue Account, which are in agreement therewith, comply with the Companies Act, 1944 and respectively give a true and fair view of the state of the Society's affairs at 31 December, 1961, and of the surplus for the year ended on that date.

Chesterfield House,
26/28, Fenchurch Street, London, EC3
5th April 1962

Gerard van de Linde & So
Chartered Accountant

