

# CONTEMPORARY ART SOCIETY

## REPORT

With Illustrations

For the Years 1919 to June 1924

1924

# CONTEMPORARY ART SOCIETY

## REPORT

With Illustrations

For the Years 1919 to June 1924

1924

# The Contemporary Art Society

For the Acquisition of Works of Modern Art for Loan or Gift  
to Public Galleries

*President :*

LORD HOWARD DE WALDEN.

*Treasurer :*

SIR C. KENDALL-BUTLER, K.B.E.  
Bourton House, Shrivenham.

*Honorary Secretary :*

RT. HON. F. LEVERTON HARRIS.  
70 Grosvenor St., W. 1

*Committee :*

LORD HENRY BENTINCK, M.P. (Chairman).

CHARLES AITKEN.

T. G. BLACKWELL, O.B.E.

MUIRHEAD BONE.

SAMUEL COURTAULD.

A. M. DANIEL.

CAMPBELL DODGSON, C.B.E.

MRS. CAMPBELL DODGSON.

ROGER FRY.

ST. JOHN HUTCHINSON.

EDWARD MARSH, C.B., C.M.G., C.V.O.

ERNEST MARSH.

RODERICK MEIKLEJOHN, C.B.

THE HON. JASPER RIDLEY.

SIR MICHAEL SADLER, C.B., K.C.S.I.

THE EARL OF SANDWICH.

SIR PHILIP SASSOON, BART., M.P., G.B.E.,  
C.M.G.

THE HONORARY SECRETARY.

## REPORT

IN the conviction that much of the finer artistic talent of our time was imperfectly or not at all represented in the National and Municipal Galleries, the Contemporary Art Society was initiated in the year 1909. Its aim is to encourage, by the purchase and exhibition of chosen examples of their work, painters who in other countries would enjoy a certain official patronage.

During the last century little or no attempt was made to secure for the nation specimens of such vital contemporary painting as has since proved to stand the test of time, and, to take a few instances, it is almost entirely due to private foresight and munificence that Alfred Stevens, the Pre-Raphaelites, and the Impressionists are represented at all in the public collections. This Society, on whose Committee a wide range of opinions is represented, hopes to obviate a similar reproach against the present age, and by discriminating purchase to fill up what would seem to posterity an inexcusable gap in our museums and galleries, overloaded as they are with ephemeral work of the time preceding our own.

Side by side with the enrichment of the collections, the Society has the further aim, in the interests of the artists themselves, of supplying, so far as its means allow, the falling off in private buying which has resulted from the present financial stringency. These are difficult times for young painters and sculptors who have to live on the proceeds of their work, and the need for some form of public patronage was never greater than now.

The method of purchase is as follows :—the income of the Society is divided into two halves, one of which is spent by the Committee as a whole. A single member of the Committee is appointed as buyer for twelve months, and has the spending of the other half of the income, together with any fresh subscriptions or donations which he may raise by his own exertions. The purchases are either retained by the Society and lent from time to time for exhibition, or presented outright to some public gallery. After a certain number of years it is in the power of the Committee to sell pictures which for any reason they no longer wish to keep, and to buy others with the proceeds.

The present Report contains a complete list of the acquisitions of the Society to date, showing separately those made since the issue of the last Report, which brought its history down to the end of 1919, balance sheets showing its financial position since 1919, and a statement of subscriptions and donations for 1923, together with a few new ones for 1924.

The most conspicuous event was an Exhibition, composed partly of the principal pictures and sculptures acquired by the Society and partly of loans, which was held in the summer of 1923 at Grosvenor House by the kind permission of the Duke and Duchess of Westminster. The Trustees of the National Gallery of British Art were good enough to lend the works of art which they had accepted from the Society. The Exhibition was largely attended, and favourably noticed by the Press; but response to the appeal which was made for fresh funds was disappointingly small.

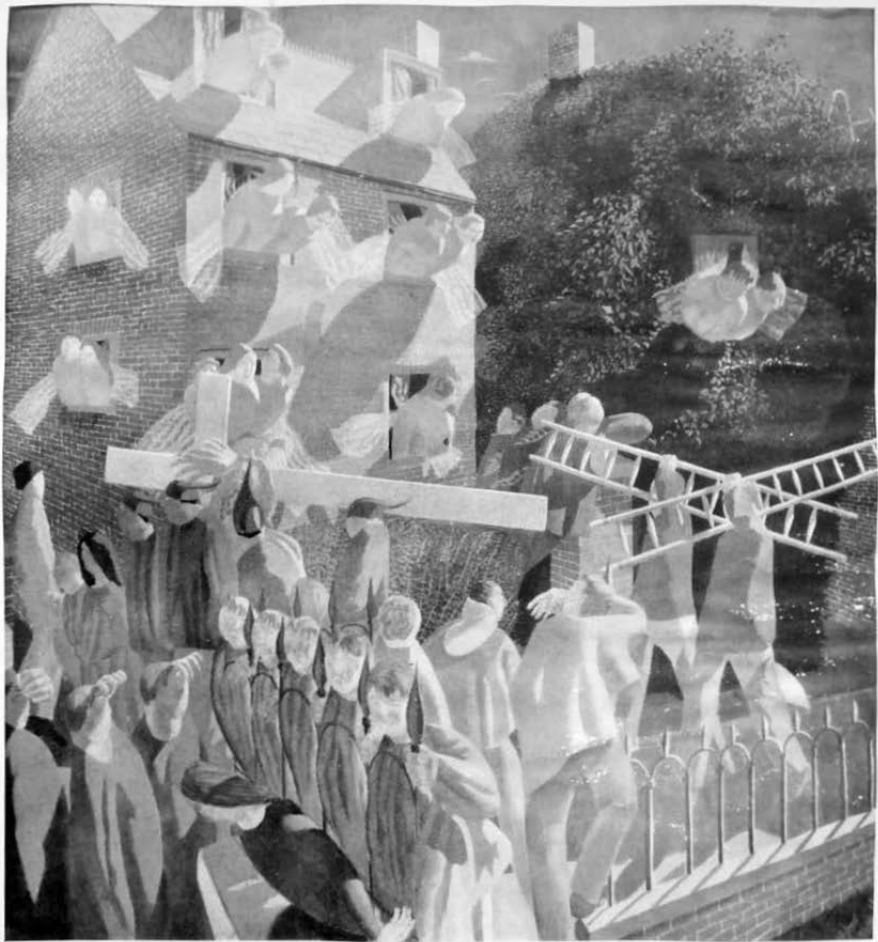
Loans have been made to exhibitions at Ammonford, Bradford, Burton, Leeds, Leicester, Mold, Stockholm, Stoke, Sunderland, Whitechapel (twice); and a large number of works have been accepted as gifts by various public galleries, as shown in the list.

A fund was started in 1919 in connection with the Society for the purpose of acquiring original modern prints and drawings, both British and foreign, which should remain in the possession of the Society for a certain period, and should subsequently be presented to the British Museum. This fund was organised and administered by Mr. Campbell Dodgson, the Keeper of Prints and Drawings, British Museum, who kindly arranged for two exhibitions at 22 Montagu Square, W., for the benefit of the fund. A separate Report as to the work of the fund is attached, from which it will be seen that, thanks to Mr. Campbell Dodgson's untiring energy, considerable results have been achieved.

The Committee are anxious to start a separate fund for the purchase of work by contemporary artists of foreign nationality. It is felt that the public galleries in England are very deficient in representative works of foreign schools, and they appeal for additional subscriptions, which can be earmarked for this purpose. A very generous offer has been made anonymously of £1,000 provided the Committee can raise another £1,000. We have already received a few subscriptions (see Appendix D) towards this fund, and in order to help further the Committee have organised a Loan Exhibition of Modern Foreign Painting from private collections in England. This Exhibition will be held in June, and it is hoped that those who are interested will do their best to further the interests of this section by sending subscriptions to the Secretary.

THE RT. HON. F. LEVERTON HARRIS,

70 Grosvenor Street, London W. 1.



Christ Carrying the Cross

STANLEY SPENCER

61  $\frac{1}{2}$  x 56  $\frac{1}{2}$  inches

## PRIVILEGES TO MEMBERS OF THE CONTEMPORARY ART SOCIETY.

It has been arranged that all members of the Contemporary Art Society may attend, free of charge, Exhibitions at the following galleries on presentation of their Card of Membership :

The Goupil Gallery, 5 Regent Street, S.W. 1.  
The Independent Gallery, 7A Grafton Street.  
The Lefèvre Galleries, 1A King Street, St. James's.  
The Leicester Galleries, Leicester Square, W.C. 2.

It is hoped that in the course of the next year further privileges may be obtained. Cards of Membership have been sent to all members.

## APPENDIX A

### PURCHASES

(subsequent to the last Report in 1920).

#### *Purchased 1920.*

CHESTON, C. S.	-	-	-	Somerset Landscape	-	-	-	-	Oil.
GERTLER, MARK	-	-	-	Portrait	-	-	-	-	Oil.
LEWIS, A. NEVILLE	-	-	-	In Provence	-	-	-	-	Oil.
ROBERTS, WILLIAM	-	-	-	Head of a Woman	-	-	-	-	Oil.
SICKERT, WALTER	-	-	-	Roquefort	-	-	-	-	Oil.
WHEATLEY, JOHN	-	-	-	Campell Dodgson, Esq., C.B.E.	-	-	-	-	Pencil.

#### *Purchased 1921.*

EPSTEIN, JACOB	-	-	-	Bust of Kramer	-	-	-	-	Bronze.
LAMB, HENRY	-	-	-	Head of a Breton Peasant	-	-	-	-	Oil.
NASH, JOHN	-	-	-	View from a Garden	-	-	-	-	Oil.
SPENCER, GILBERT	-	-	-	Portrait	-	-	-	-	Oil.
SPENCER, STANLEY	-	-	-	Christ carrying the Cross	-	-	-	-	Oil.

#### *Purchased 1922.*

EVANS, POWYS	-	-	-	Cannon Street Station	-	-	-	-	Oil.
GERTLER, MARK	-	-	-	Basque Shepherdess	-	-	-	-	Oil.
" "	-	-	-	Basque Boy	-	-	-	-	Oil.
HUBBARD, E. H.	-	-	-	Bostock's Circus	-	-	-	-	Oil.
LIVENS, H. M.	-	-	-	Reflections	-	-	-	-	Oil.
PICKARD, MISS L.	-	-	-	A Gloucestershire Village	-	-	-	-	Oil.
ROBERTS, WILLIAM	-	-	-	The Red Turban	-	-	-	-	Oil.
WHEATLEY, JOHN	-	-	-	Portrait of Mrs. J. Wheatley	-	-	-	-	Oil.

## PURCHASES AND GIFTS

*Purchased 1923.*

BEERBOHM, MAX	-	-	-	Echo (Lytton Strachey)	-	-	-	Water Colour.
BELL, VANESSA	-	-	-	Chrysanthemums	-	-	-	Oil.
CARLINE, RICHARD	-	-	-	Family Group	-	-	-	Oil.
CHARLTON, G. J.	-	-	-	The Pantry	-	-	-	Water Colour.
CUNDALL, C.	-	-	-	Bains Chauds	-	-	-	Oil.
"	-	-	-	Anticoli	-	-	-	Water Colour.
FRY, ROGER	-	-	-	Winter Scene, Sussex	-	-	-	Oil.
GRANT, DUNCAN	-	-	-	Flowers	-	-	-	Oil.
"	-	-	-	Boats—St. Tropez	-	-	-	Oil.
JONES, GWYNNE	-	-	-	Head of a Man	-	-	-	Oil.
LEWIS, A. NEVILLE	-	-	-	Charlie	-	-	-	Oil.
MENINSKY, B.	-	-	-	David	-	-	-	Oil.
MONNINGTON, T. W.	-	-	-	Figures in a Landscape	-	-	-	Oil.
NASH, JOHN	-	-	-	The Moat	-	-	-	Oil.
PORTER, F.	-	-	-	At Littlehampton	-	-	-	Oil.
ROBERTS, WILLIAM	-	-	-	A Creole	-	-	-	Oil.
SPENCER, GILBERT	-	-	-	Sheep in a Landscape	-	-	-	Oil.
WALTON, ALLAN	-	-	-	St. Paul's	-	-	-	Oil.

*Purchased 1924.*

O'CONNOR, R.	-	-	-	Nude	-	-	-	Oil.
SMITH, M.	-	-	-	Nude	-	-	-	Oil.
POWER, J. W.	-	-	-	Stamford River	-	-	-	Oil.
BARNE, G.	-	-	-	The Window	-	-	-	Oil.
PORTER, F. J.	-	-	-	The Negress	-	-	-	Oil.
BELL, VANESSA	-	-	-	Family Group	-	-	-	Oil.

## GIFTS

(subsequent to last Report in 1920).

## 1921.

LESSORE, THERESE	-	-	-	Saturday Night	-	-	-	Oil.
"	-	-	-	Better in the Mirror	-	-	-	Water Colour.
SPENCER, GILBERT	-	-	-	The Shepherds Amazed	-	-	-	Oil.

*Presented by Lord Henry Bentinck.*

NASH, PAUL	-	-	-	Whyteleafe Cross	-	-	-	Oil.
JAPP, DARSIE	-	-	-	A Murcian Woman	-	-	-	Oil.
TRYAN, WYNDHAM	-	-	-	A Spanish Landscape	-	-	-	Oil.

*Presented by Mr. Edward Marsh.*

## 1922.

LEWIS, A. NEVILLE	-	-	-	Gypsies	-	-	-	Oil.
-------------------	---	---	---	---------	---	---	---	------

*Presented by Mr. Muirhead Bone and others.*

MARTINEAU	-	-	-	Head of a Girl	-	-	-	Pencil.
-----------	---	---	---	----------------	---	---	---	---------

*Presented by Miss Martineau.*

NASH, PAUL	-	-	-	Trees	-	-	-	Water Colour.
"	-	-	-	Landscape	-	-	-	Water Colour.

*Presented by Mr. Edward Marsh.*





David

BERNARD MENINSKY

40 x 30 inches



Porthleven

CHARLES GINNER

20 x 24 inches



Under the Hills

ETHELBERT WHITE

13 1/2 x 17 inches



# APPENDIX B

## List of Pictures presented to the National Gallery, Millbank

BELL, VANESSA	-	-	-	-	Chrysanthemums	-	-	-	-	-	Oil.
BONE, MUIRHEAD	-	-	-	-	Botanic Gardens, Glasgow	-	-	-	-	-	Oil.
CAMERON, SIR D. Y., R.A.	-	-	-	-	Ben Ledi—Early Spring	-	-	-	-	-	Oil.
CONDER, CHARLES	-	-	-	-	The Apple	-	-	-	-	-	Oil.
GAUGUIN, PAUL	-	-	-	-	Tahitian Study	-	-	-	-	-	Oil.
GERE, MARGARET	-	-	-	-	Noah's Ark	-	-	-	-	-	Oil.
GRANT, DUNCAN	-	-	-	-	Queen of Sheba	-	-	-	-	-	Oil.
GINNER, CHARLES	-	-	-	-	Porthleven	-	-	-	-	-	Oil.
GORE, SPENCER	-	-	-	-	Houghton Place	-	-	-	-	-	Oil.
HENDERSON, ELSIE M.	-	-	-	-	Three Studies of a Leopard	-	-	-	-	-	Drawing.
"	"	"	"	"	A Tiger	-	-	-	-	-	Drawing.
HOLMES, SIR C. J.	-	-	-	-	Red Ruin	-	-	-	-	-	Oil.
JOHN, AUGUSTUS	-	-	-	-	Smiling Woman	-	-	-	-	-	Oil.
"	"	"	"	"	Walpurgis Night	-	-	-	-	-	Pen and Ink
											Wash.
JOHN, GWEN	-	-	-	-	Nude Girl	-	-	-	-	-	Oil.
"	"	"	"	"	Girl Reading	-	-	-	-	-	Oil.
LAMB, HENRY	-	-	-	-	Phantasie	-	-	-	-	-	Oil.
McEVoy, AMBROSE	-	-	-	-	In a Mirror	-	-	-	-	-	Water Colour.
MORRICE, J. W.	-	-	-	-	House at Santiago	-	-	-	-	-	Oil.
NEVINSON, C. R. W.	-	-	-	-	La Mitrailleuse	-	-	-	-	-	Oil.
NICHOLSON, WILLIAM	-	-	-	-	Lowestoft Bowl	-	-	-	-	-	Oil.
PISSARRO, LUCIEN	-	-	-	-	High View : Fishpond	-	-	-	-	-	Oil.
RICH, A. W.	-	-	-	-	St. Mary's, Oxford	-	-	-	-	-	Water Colour.
ROTHENSTEIN, W.	-	-	-	-	Two Women	-	-	-	-	-	Oil.
SANDS, ETHEL	-	-	-	-	An Interior	-	-	-	-	-	Oil.
SICKERT, WALTER	-	-	-	-	Portrait of George Moore	-	-	-	-	-	Oil.
"	"	"	"	"	Despair	-	-	-	-	-	Pencil.
"	"	"	"	"	Ennui	-	-	-	-	-	Oil.
"	"	"	"	"	Roquefort	-	-	-	-	-	Oil.
STOREY, G. A.	-	-	-	-	My Father	-	-	-	-	-	Oil.
THOMAS, J. HAVARD	-	-	-	-	The Offering	-	-	-	-	-	Pencil.
TONKS, HENRY	-	-	-	-	A Girl's Head	-	-	-	-	-	Oil.
"	"	"	"	"	Girl with a Parrot	-	-	-	-	-	Oil.
"	"	"	"	"	Madame Rodin	-	-	-	-	-	Pastel.
"	"	"	"	"	Auguste Rodin	-	-	-	-	-	Pastel.
"	"	"	"	"	The Toilet	-	-	-	-	-	Pastel.

## SCULPTURE

EPSTEIN, JACOB	-	-	-	-	Bust of J. Kramer	-	-	-	-	-	Bronze.
"	"	"	"	"	Head of a Girl	-	-	-	-	-	Bronze.
GILL, ERIC	-	-	-	-	Crucifixion	-	-	-	-	-	Stone.



Echo  $15\frac{1}{2} \times 6\frac{1}{2}$  inches  
MAX BEERBOHM



The Moat  $20\frac{1}{2} \times 19\frac{1}{2}$  inches  
JOHN NASH



Kensington  $17\frac{1}{2} \times 23\frac{1}{2}$  inches  
ALGERNON NEWTON



The Pantry  $10\frac{1}{2} \times 15\frac{1}{2}$  inches  
G. J. CHARLTON

## List of Pictures presented to other Galleries

TOWN.	ARTIST.	TITLE.	
Aberdeen	McEVROY	La Reprise	Oil.
Aberystwyth	WHEATLEY	Portrait of Campbell	
		Dodgson	Pencil.
Bradford	JAPP	Murcian Woman	Oil.
"	SQUIRE	Blue Pool	Oil.
Blackpool	NASH	Sanctuary Wood	Oil.
Birmingham	ROTHENSTEIN	Jews Praying	Pencil.
"	HARMAR	After a Game of Tennis	Oil.
Brighton	TRYON	Spanish Landscape	Oil.
"	NASH	View from a Garden	Oil.
Bristol	FRY	Lilies	Oil.
Bootle	GINNER	Victoria Station	Oil.
Burnley	JAPP	In Dentdale	Oil.
Cardiff	WHEATLEY	Portrait of Mrs. Wheatley	Oil.
Derby	WOLMARK	Figures	Oil.
Edinburgh	PISSARRO	Blackpool Valley	Oil.
Glasgow	FERGUSON	Girl's Head	Oil.
Harrogate	CHARLTON	The Pantry	Oil.
Kingston	HUBBARD	Bostock's Circus	Oil.
"	LIVENS	Reflections	Oil.
Leeds	COLLINS BAKER	Landscape	Oil.
Leicester	BELL	Girlhood of Thisbe	Oil.
"	GERTLER	Fruit Sorters	Oil.
"	MUIRHEAD, D.	On the Orwell	Water Colour.
Liverpool	LEES	Aldbourn	Oil.
London, British Museum	COLE	Nude Figure	Dry-Point Etching.
"	MARTINEAU	Head of a Girl	Pencil.
" Guildhall	FLETCHER	Baker's Chop House	Water Colour.
" South Kensington	FISHER, M.	Girls Bathing	Water Colour.
Manchester	CHESTON	Somerset Landscape	Oil.
"	KENNINGTON	A Lean-to	Chalk.
"	MCBEY	Trial Proof	Water Colour.
Merthyr Tydfil	ROTHENSTEIN	A Fakir	Pencil.
Newcastle	MACGREGOR	Street in Fuenterrabia	Oil.
Nottingham	PICKARD	Gloucestershire Village	Oil.
Plymouth	KNOX	Cornish Mine	Water Colour.
Preston	PISSARRO	Eden Valley	Oil.
Rochdale	FRY	Studland Bay	Oil.
"	ETCHELLS	Flowers	Oil.
Sheffield	GOSSE	Landscape	Oil.
Sunderland	SYMONS	Little Squaw	Oil.
Stoke-on-Trent	LEES	Landscape	Oil.

## LIST OF PICTURES PRESENTED

TOWN.	ARTIST.	TITLE.	
Swansea - - -	GINNER - -	Penalty Hill - -	Oil.
Truro - - -	EDEN - -	Interior of a Church - -	Water Colour.
" - - -	THOMPSON - -	The Harbour - -	Pencil.
York - - -	BAYES - -	Day Dreams - -	Oil.

## APPENDIX C

## PURCHASES

(Prior to 1920).

ADENEY, W. B. - - -	Tunley Bottom - - -	Oil.
BAKER, C. H. COLLINS - - -	Cader and Birdrock - - -	Oil.
BARNE, GEORGE - - -	Still Life - - -	Oil.
BELL, VANESSA - - -	Girlhood of Thisbe - - -	Oil.
BONE, MUIRHEAD - - -	Botanic Gardens, Glasgow - - -	Oil.
" - - -	Sketch in Viterbo - - -	Oil.
BRETT, HON. DOROTHY - - -	Umbrellas - - -	Oil.
CAMERON, SIR D. Y., R.A. - - -	Ben Ledi - - -	Oil.
ESPLIN, MABEL - - -	Music - - -	
ETCHELLS, MISS - - -	Still Life - - -	Oil.
ETCHELLS, F. - - -	Woman at Mirror - - -	Oil.
FERGUSON, J. D. - - -	Lady's Head - - -	Oil.
FLETCHER, HANS LIP - - -	Baker's Chop House - - -	Water Colour.
FRY, ROGER - - -	Lily - - -	Oil.
GAUGUIN, PAUL - - -	Tahitian Study - - -	Oil.
GERE, MARGARET - - -	Noah's Ark - - -	Oil.
GERTLER, MARK - - -	Fruit Sorters - - -	Oil.
" - - -	Still Life - - -	Oil.
GILL, ERIC - - -	Stations of the Cross - - -	Drawing.
GINNER, CHARLES - - -	Penalty Hill - - -	Oil.
" - - -	Victoria - - -	Oil.
GORE, SPENCER - - -	Houghton Place - - -	Oil.
GRANT, DUNCAN - - -	Adam and Eve - - -	Oil.
GUEVARA, ALVARO - - -	Music Hall - - -	Oil.
HAMILTON, C. F. - - -	The Natives - - -	Oil.
HAMNETT, NINA - - -	Still Life - - -	Oil.
HARMAR, FAIRLIE - - -	After a Game of Lawn Tennis - - -	Oil.
HENDERSON, ELSIE M. - - -	Study of a Tiger - - -	Chalk.
" - - -	Three Studies of Leopards - - -	Chalk.
" - - -	Puma - - -	Drawing.
JAPP, DARSIE - - -	In Dentdale - - -	Oil.
JOHN, AUGUSTUS - - -	Smiling Woman - - -	Oil.
KRISTIAN, ROALD - - -	Still Life - - -	Oil.
KENNINGTON, ERIC - - -	A Lean-to - - -	Pastel.
" - - -	Raider with a Cosh - - -	Pastel.



Boats, St. Tropez

DUNCAN GRANT

25 x 30 inches



Charlie

A. NEVILLE LEWIS

14 x 16 inches



Chrysanthemums

VANESSA BELL

24 x 18 inches

## PURCHASES

11

LAMB, HENRY	-	-	-	-	Phantasy	-	-	-	-	-	Oil.
LEES, DERWENT	-	-	-	-	Arenig Manor, North Wales	-	-	-	-	-	Oil.
"	"	"	"	"	Aldbourn	-	-	-	-	-	Oil.
LEWIS, WYNDHAM	-	-	-	-	Laughing Woman	-	-	-	-	-	Oil.
MCBEY, JAMES	-	-	-	-	Trial Proof	-	-	-	-	-	Water Colour.
MCVOY, AMBROSE	-	-	-	-	La Reprise	-	-	-	-	-	Oil.
"	"	"	"	"	Study of Model for Picture: "The Ear- ring"	-	-	-	-	-	Water Colour.
MACGREGOR, W. Y., A.R.S.A.	-	-	-	-	Street in Fuenterrabia	-	-	-	-	-	Oil.
MILNE, MALCOLM	-	-	-	-	Apple Blossom	-	-	-	-	-	Oil.
MORRICE, JAMES W.	-	-	-	-	House in Santiago	-	-	-	-	-	Oil.
NASH, PAUL	-	-	-	-	Sanctuary Wood	-	-	-	-	-	Chalk.
NEVINSON, C. R. W.	-	-	-	-	La Mitrailluse	-	-	-	-	-	Oil.
NICHOLSON, WILLIAM	-	-	-	-	Lowestoft Bowl	-	-	-	-	-	Oil.
O'CONNOR, R.	-	-	-	-	Irises	-	-	-	-	-	Oil.
PISSARRO, LUCIEN	-	-	-	-	Blackpool Valley	-	-	-	-	-	Oil.
"	"	"	"	"	High View: Fishpond	-	-	-	-	-	Oil.
ROTHENSTEIN, WILLIAM	-	-	-	-	A Fakir	-	-	-	-	-	Drawing.
SICKERT, WALTER	-	-	-	-	Ennui	-	-	-	-	-	Oil.
"	"	"	"	"	Despair	-	-	-	-	-	Drawing.
"	"	"	"	"	Army and Navy	-	-	-	-	-	Oil.
SPENCER, GILBERT	-	-	-	-	Seven Ages of Man	-	-	-	-	-	Oil.
SQUIRE, H.	-	-	-	-	The Blue Pool	-	-	-	-	-	Oil.
STOREY, G. A., R.A.	-	-	-	-	The Artist's Father	-	-	-	-	-	Oil.
SYMONS, CHRISTIAN	-	-	-	-	The Little Squaw	-	-	-	-	-	Oil.
TONKS, HENRY	-	-	-	-	Girl's Head	-	-	-	-	-	Oil.
"	"	"	"	"	Two Pastels: M. Rodin	-	-	-	-	-	Pastel
					Mme. Rodin	-	-	-	-	-	Pastel.

## SCULPTURE

EPSTEIN, JACOB	-	-	-	-	Bust of a Girl	-	-	-	-	-	Bronze.
GILL, ERIC	-	-	-	-	Two Bas-Reliefs	-	-	-	-	-	Stone.

## GIFTS

(Prior to 1920).

COLE, E.	-	-	-	-	Nude Figure	-	-	-	-	-	Etching.
					<i>Presented by Ernest Collings, Esq.</i>						
CONDER, CHARLES	-	-	-	-	The Green Apple	-	-	-	-	-	Oil.
					<i>Presented by Dalhousie Young, Esq.</i>						
EDEN, SIR WILLIAM., BART.	-	-	-	-	Interior of a Church	-	-	-	-	-	Water Colour.
					<i>Presented by the Artist.</i>						
FISHER, MARK, A.R.A.	-	-	-	-	Boys Bathing	-	-	-	-	-	Water Colour.
					<i>Presented by a Member of the Committee.</i>						
HENDERSON, ELSIE M.	-	-	-	-	Leopard Standing	-	-	-	-	-	Charcoal.
					<i>Presented by T. G. Blackwell, Esq.</i>						



## GIFTS

HENDERSON, ELSIE M.	-	-	-	Three Studies of a Lioness	-	-	-	Charcoal
				<i>Presented by Campbell Dodgson, Esq.</i>				
HOLMES, SIR C. J.	-	-	-	The Red Ruin	-	-	-	Oil.
				<i>Presented by the Artist.</i>				
JOHN, AUGUSTUS	-	-	-	Study	-	-	-	Drawing.
				<i>Presented by A. N. MacNicol, Esq.</i>				
JOHN, GWEN	-	-	-	Nude	-	-	-	Oil.
				<i>Presented by a Member of the Committee.</i>				
"	"	-	-	Girl Reading	-	-	-	Oil.
				<i>Presented by a Member of the Committee.</i>				
KNOX, MISS	-	-	-	A Cornish Mine	-	-	-	Water Colour.
				<i>Presented by Lord Henry Bentinck.</i>				
LAMB, HENRY	-	-	-	Head of a Woman	-	-	-	Drawing.
				<i>Presented by Lord Henry Bentinck.</i>				
MUIRHEAD, DAVID	-	-	-	On the Orwell	-	-	-	Water Colour.
				<i>Presented by a Member of the Committee.</i>				
PISSARRO, LUCIEN	-	-	-	Eden Valley	-	-	-	Oil.
				<i>Presented by Sir Michael Sadler.</i>				
RICH, A. W.	-	-	-	St. Mary's Church	-	-	-	Water Colour.
				<i>Presented by Miss E. P. M'Ghee.</i>				
ROTHENSTEIN, WILLIAM	-	-	-	Jews Praying	-	-	-	Drawing.
				<i>Presented by a Member of the Committee.</i>				
"	"	-	-	Two Figures (Women)	-	-	-	Oil.
				<i>Presented by Dalhousie Young, Esq.</i>				
"	"	-	-	Head of Tagore	-	-	-	Drawing.
				<i>Presented by Lord Henry Bentinck.</i>				
SANDS, MISS	-	-	-	The Chintz Couch	-	-	-	Oil.
				<i>Presented by the Artist.</i>				
SICKERT, WALTER	-	-	-	Portrait of George Moore	-	-	-	Oil.
				<i>Presented by P. W. Steer, Esq.</i>				
THOMAS, J. HAVARD	-	-	-	The Offering	-	-	-	Drawing
				<i>Presented by Sir M. Sadler.</i>				
THOMPSON, GEORGE	-	-	-	The Harbour	-	-	-	Drawing.
				<i>Presented by Lady Henry Bentinck.</i>				
TONKS, HENRY	-	-	-	Girl and Parrot	-	-	-	Oil.
				<i>Presented by W. C. Alexander, Esq.</i>				
"	"	-	-	The Toilet	-	-	-	Pastel.
				<i>Presented by T. G. Blackwell, Esq.</i>				
WOLMARK, ALFRED	-	-	-	Two Fishermen	-	-	-	Oil.
				<i>Presented by Alfred Kohnstamm, Esq.</i>				

## SCULPTURE

EPSTEIN, JACOB	-	-	-	The Dreamer	-	-	-	
				<i>Presented by Mr. and Mrs. Francis Dodd.</i>				
RICKETTS, CHARLES	-	-	-	Mother and Child	-	-	-	
				<i>Presented by a Member of the Committee.</i>				



Queen Victoria's visit to Glasgow, 1888  
SIR JOHN LAVERY, R.A.

24 x 28½ inches



Bust of Kramer

JACOB EPSTEIN

Ht. 25½ inches



A Creole

W. ROBERTS

24 x 20 inches

## APPENDIX D

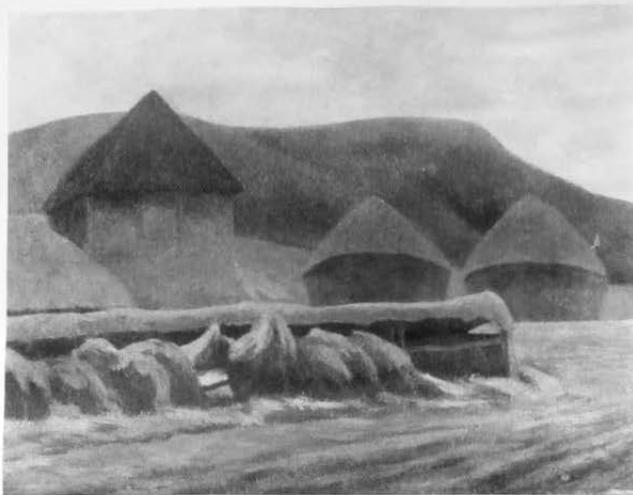
### List of Subscribers for 1923

*Sums marked with an asterisk (\*) are Donations.*

Agnew, Gerald	-	-	-	£2	2	0	Cavendish-Bentinck, F.	-	-	-	£2	2	0
Aitken, Charles	-	-	-	1	1	0	Cazalet, Miss Thelma	-	-	-	*1	1	0
Alford, John	-	-	-	1	1	0	Cazalet, Capt. Victor	-	-	-	3	3	0
Armstrong, Col. W. E. A.	-	-	-	1	1	0	Cazalet, Mr.	-	-	-	1	1	0
Asquith, Hon. Mrs. Arthur	-	-	-	4	4	0	Christie, John	-	-	-	*5	0	0
Ball, Mrs.	-	-	-	1	1	0	Churchill, Mrs. Winston	-	-	-	*5	5	0
Barran, Sir John	-	-	-	*3	3	0	Clutton-Brock, A.	-	-	-	3	3	0
Blackwell, Geoffrey	-	-	-	5	5	0	Colefax, Lady	-	-	-	1	1	0
Blaker, Hugh	-	-	-	1	1	0	Collins, Ernest H. R.	-	-	-	1	1	0
Beale, Sir John Field	-	-	-	1	1	0	Cranborne, Viscount	-	-	-	3	3	0
Beauchamp, Earl	-	-	-	1	1	0	Crawford and Balcarres, Earl of	-	-	-	1	1	0
Behrend, Mrs. J. L.	-	-	-	1	1	0	Currie, Laurence	-	-	-	5	0	0
Bennett, Arnold	-	-	-	5	5	0	Curzon of Kedleston, Marquess	-	-	-	1	1	0
Benson, Lady Violet	-	-	-	*1	1	0	Daniel, A. N.	-	-	-	2	2	0
Bentinck, Lord Henry	-	-	-	5	0	0	Dodgson, Campbell	-	-	-	5	5	0
Berners, Lord	-	-	-	*5	0	0	Druce, Miss E. M. C.	-	-	-	1	1	0
Bone, Muirhead	-	-	-	1	1	0	Eckhard, Mrs. M. L.	-	-	-	2	2	0
Bonham-Carter, Sir Maurice	-	-	-	*2	0	0	Erlanger, Baroness Emile d'	-	-	-	*5	0	0
Booth, G. M.	-	-	-	1	1	0	Ford, Patrick	-	-	-	5	0	0
Bootle, County Borough of	-	-	-	1	1	0	Fry, Geoffrey	-	-	-	1	1	0
Borwick, Leonard	-	-	-	1	1	0	Fry, Roger	-	-	-	1	1	0
Bourne, Mrs. R. H.	-	-	-	1	1	0	Graham, Mrs. Harry	-	-	-	1	1	0
Bouverie, Hon. Mrs. Stuart P.	-	-	-	1	1	0	Gray, Mrs. Allan	-	-	-	1	1	0
Brown & Phillips, Messrs.	-	-	-	1	1	0	Grigg, Sir Edward	-	-	-	5	0	0
Brown, Mrs.	-	-	-	1	1	0	Gooreynd, Mrs. Koch de	-	-	-	*2	2	0
Burns, Walter	-	-	-	5	0	0	Grosvenor, Lady Edward	-	-	-	2	2	0
Butler, Sir G. G.	-	-	-	1	1	0	Gubbay, David	-	-	-	3	3	0
Butler, Sir C. K.	-	-	-	2	2	0	Guest, Hon. Mrs. Lionel	-	-	-	2	0	0
Butterworth, Walter	-	-	-	1	1	0							
Caillard, Sir Vincent	-	-	-	10	10	0							

## LIST OF SUBSCRIPTIONS

Guinness, Mrs. Richard - - -	£3 3 0	Marsh, Edward - - -	£2 2 0
Gwynne, Miss Stella - - -	1 1 0	Marsh, Ernest - - -	3 3 0
		Mathias, Mrs. - - -	1 1 0
Harris, Henry B. - - -	1 1 0	Maugham, Mrs. Somerset - - -	*5 0 0
Harris, Rt. Hon. F. Leverton - - -	1 1 0	Maynard, R. H. - - -	1 1 0
Hartington, Marquess of - - -	*1 0 0	Maynard, Mrs. - - -	1 1 0
Hawker, Mrs. C. - - -	1 1 0	Meade-King, Cyril - - -	1 1 0
Herbert, Hon. Mrs. Aubrey - - -	1 1 0	Meiklejohn, Roderick - - -	1 1 0
Hind, Arthur M. - - -	1 1 0	Mitchell, Mrs. - - -	5 5 0
Hodge, Harold - - -	1 1 0	Montagu, Hon. Mrs. Edwin - - -	5 0 0
Holden, Mrs. Norman - - -	*10 0 0	Moore, Charles H. - - -	1 1 0
Holland, Hon. Lionel - - -	1 1 0	Mosley, Lady Cynthia - - -	*1 1 0
Horniman, E. J. - - -	2 2 0		
Howard de Walden, Lord - - -	100 0 0	Nichols, J. Bowyer - - -	2 2 0
Howell, Miss Lilian - - -	1 1 0	Nicolson, Hon. Mrs. Harold - - -	2 2 0
Hutchinson, St. John - - -	1 1 0	Nightingale, Mrs. L. H. Shore - - -	1 1 0
Hutton, Mrs. B. L. G. K. - - -	1 1 0	Norton, H. T. J. - - -	2 2 0
Hylton, Lady - - -	1 1 0	Novello, Ivor - - -	2 2 0
Jones, E. Alfred - - -	1 1 0	Ogilvie, Col. Sir Andrew M. - - -	1 1 0
		Ormsby-Gore, Hon. W. - - -	2 2 0
Kelly, Mrs. J. D. - - -	1 1 0		
Kerry, Countess of - - -	1 1 0	Parkes, Kineton - - -	1 1 0
Keynes, J. M. - - -	2 2 0	Peake, Lady Joan - - -	*2 2 0
Kohnstamm, Alfred - - -	2 2 0	Pearson, L. G. - - -	1 1 0
		Pease, J. Beaumont - - -	1 1 0
Lake, Miss B. - - -	1 1 0	Preston, J. Kenison - - -	1 1 0
Landon, Perceval - - -	1 1 0	Philpot, Glyn - - -	*5 0 0
Lathom, Earl of - - -	*20 0 0	Plymouth, Earl of - - -	5 5 0
Lavery, Lady - - -	5 5 0		
Lessing, Mrs. - - -	1 1 0	Ranksborough, Lady - - -	1 1 0
Leverhulme, Viscount - - -	*21 0 0	Riddell, Lord - - -	*10 0 0
Livens, H. M. - - -	1 1 0	Ridley, Hon. Jasper - - -	2 2 0
Locker-Lampson, Commander O. - - -	2 0 0	Rinder, Frank - - -	1 1 0
Lonsdale, Countess of - - -	1 1 0	Rochdale, Borough of - - -	1 1 0
Lousada, J. G. - - -	1 1 0	Russell, Mrs. Gilbert - - -	*10 0 0
Lyttelton, Capt. Oliver - - -	5 0 0	Rutherford, C. L. - - -	2 2 0
MacColl, D. S. - - -	1 1 0	Sadler, Sir Michael - - -	11 1 0
Macmillan, Sir Frederick - - -	2 2 0	Sandwich, Earl of - - -	2 2 0
Macandrew, Mrs. - - -	1 1 0	Sargent, J. S. - - -	2 2 0
M'Kenna, Mrs. Reginald - - -	*1 1 0	Schiff, Sydney - - -	1 1 0
Madan, P. P. - - -	1 1 0	Sinclair, Lady - - -	*2 0 0
Malcolm, D. O. - - -	2 2 0	Sinclair, Sir Archibald - - -	1 1 0
Manchester, Corporation of - - -	5 5 0	Smith, V. Hugh - - -	1 1 0
Marchant, W. S. - - -	1 1 0	Spears, Mrs. Louis - - -	1 1 0



Winter Scene, Sussex

ROGER FRY

18 x 24 inches



Family Group

RICHARD CARLINE

46 x 60 inches

## LIST OF SUBSCRIPTIONS

15

Spencer-Churchill, Lord Ivor	-	-	£5	0	0	Velten, H.	-	-	-	-	£1	1	0			
Spielmann, Sir Isidore	-	-	-	1	1	0	Walker, F. G.	-	-	-	-	1	1	0		
Squire, J. C.	-	-	-	*1	1	0	Warrender, Miss Alice	-	-	-	-	5	0	0		
Stanley, Lord	-	-	-	*10	0	0	Warrender, Lady Maud	-	-	-	-	*1	1	0		
Steer, P. W.	-	-	-	-	2	2	0	Wellesley, Lord Gerald	-	-	-	-	*1	0	0	
Stevens, W. H. P.	-	-	-	-	1	1	0	Wellesley, Lady Gerald	-	-	-	-	3	0	0	
Stevenson, Lord	-	-	-	-	5	0	0	Wemyss and March, Grace Countess of	-	-	-	-	1	0	0	
Stoop, Frank	-	-	-	-	1	1	0	Whitworth Institute, Manchester	-	-	-	-	3	3	0	
Storrs, Sir Ronald	-	-	-	-	1	1	0	Wiborg, Miss M. H.	-	-	-	-	2	0	0	
Swansea, Corporation of	-	-	-	-	*2	2	0	Withers, Dr. Percy	-	-	-	-	1	1	0	
Taylor, Walter	-	-	-	-	*10	0	0	Witt, Sir Robert	-	-	-	-	1	1	0	
Temperley, H. T.	-	-	-	-	-	1	1	0	Wodehouse, Lady	-	-	-	-	*2	2	0
Tonks, Henry	-	-	-	-	-	1	1	0	Wyndham, Richard	-	-	-	-	3	0	0

## Additional Subscriptions for 1924

Aberystwyth, National Library of Wales	£1	1	0	Morrison, Mrs. M.	-	-	-	£2	2	0				
Beit, Sir Otto	-	-	-	10	10	0	Newcastle-on-Tyne	-	-	-	2	2	0	
Cardiff, National Museum of Wales	5	5	0	Portsmouth, Countess of	-	-	-	-	-	-	1	1	0	
Courtauld, S. C.	-	-	-	25	0	0	Reid, Sir Hugh	-	-	-	*25	0	0	
Courtauld, S.	-	-	-	50	0	0	Rendel, Mrs. Arthur	-	-	-	-	1	1	0
Elliot, Mrs. G.	-	-	-	2	2	0	Richmond, J. D.	-	-	-	-	2	2	0
Harris, The Rt. Hon. F. Leverton	-	-	-	5	5	0	Richardson, A. W.	-	-	-	-	2	2	0
Harris, Sir Austin	-	-	-	2	2	0	Sandwich, Earl of	-	-	-	-	5	5	0
Harris, Mrs. Leverton	-	-	-	2	2	0	Sassoon, Sir Philip	-	-	-	-	10	10	0
Harris, Henry	-	-	-	1	1	0	Seligman, C. D.	-	-	-	-	2	0	0
Harrison, G. T. C.	-	-	-	5	5	0	Sunderland, County Borough of	-	-	-	-	2	2	0
Hawker, B. R.	-	-	-	2	0	0	Tatlock, R. R.	-	-	-	-	2	2	0
Lane, John	-	-	-	1	1	0	Wade, P. H.	-	-	-	-	2	2	0
Leggett, Mrs. B. M.	-	-	-	2	2	0	Wadsworth, E.	-	-	-	-	20	0	0
Morrell, Alderman J. B.	-	-	-	1	1	0	Walters, L. H.	-	-	-	-	2	2	0

## Foreign Section

Aitken, C.	-	-	-	-	£1	1	0	Harris, Rt. Hon. F. Leverton	-	-	*£25	0	0
Bulley, Miss M. H.	-	-	-	-	1	0	0	Hutchinson, St. John	-	-	5	5	0
Butler, Sir C. Kendall	-	-	-	-	*5	0	0	Jowitt, W. A.	-	-	5	5	0
Courtauld, S.	-	-	-	-	50	0	0	Marsh, Edward	-	-	*2	0	0
Dodgson, Campbell	-	-	-	-	*25	0	0	Meiklejohn R.	-	-	1	1	0
Ede, H. S.	-	-	-	-	1	1	0	Pearce, C. Maresco	-	-	*20	0	0
Eumorphopoulos, G.	-	-	-	-	5	5	0	Sadler, Sir Michael	-	-	*10	0	0
Fry, Roger	-	-	-	-	5	0	0	Sassoon, Sir Philip	-	-	*25	0	0
								Smith, John Hugh	-	-	5	0	0

# Contemporary Art Society

## STATEMENT OF RECEIPTS AND EXPENDITURE FOR YEARS ENDING

31ST DECEMBER, 1920, 1921, 1922, 1923.

To Balance at Bankers, 31/12/19:					
Mural Prize Fund -	£30	0	0		
General Balance -	422	4	9		
				£452	4 9
.. Subscriptions -	-	-	-	251	8 0
.. Interest on the following					
Investments:					
Exchequer Bonds, 5 % -	£220	0	0		
War Loan -	190	0	0		
				18	10 6
	£410	0	0		
.. Interest on Bank Deposit -	-	-	-	1	16 2
				£723	19 5

By Purchase of Pictures -	-	-	-	£178	7	0
.. General Expenses, Postages, Stationery, etc., for year -	-	-	-	12	3	0
.. Balance at Bankers 31/12/20:						
Mural Prize Fund -	£30	0	0			
On Deposit -	300	0	0			
General Balance -	203	7	5			
				533	7	5
				£723	19	5

30th March, 1921.

CHARLES UNDERWOOD, F.C.I.S.

To Balance at Bankers, 31/12/20:						
Mural Prize Fund -	£30	0	0			
On Deposit -	300	0	0			
General Balance -	203	7	5			
			£533	7	5	
.. Subscriptions -	-	-	-	381	11	6
.. Interest on the following						
Investments:						
Exchequer Bonds, 5% -	£220	0	0			
War Loan -	190	0	0			
				18	10	6
	£410	0	0			
.. Interest on Bank Deposit	-	-	-	12	5	9
				£945	15	2

By Purchase of Pictures -	-	-	-	£374	8	0
.. Printing and Stationery, including cost of Illustrated Report -	-	-	-	106	11	11
.. General Expenses and Postage for year -	-	-	-	32	9	6
.. Balance at Bankers, 31/12/21:						
Mural Prize Fund -	£30	0	0			
On Deposit -	300	0	0			
General Balance -	102	5	9			
				432	5	9
				£945	15	2

26th April, 1922.

CHARLES UNDERWOOD, F.C.I.S.

To Balance at Bankers, 31/12/21:						
Mural Prize Fund -	£30	0	0			
On Deposit -	300	0	0			
General Balance -	102	5	9			
			£432	5	9	
.. Subscriptions -	-	-	235	5	0	
.. Interest on the following						
Investments:						
War Loan -	190	0	0			
War Stock, 5% -	210	10	6			
				18	10	6
		£400	10	6		
.. Interest on Bank Deposit -	-	-	-	5	1	11
.. Exchequer Bonds repaid	-	-	-	20	0	0
				£711	3	2

By Purchases of Pictures -	-	-	-	£330	19	0
.. General Expenses -	-	-	-	6	5	0
.. Balance at Bankers, 31/12/22:						
Mural Prize Fund -	£30	0	0			
On Deposit -	300	0	0			
General Balance -	43	19	2			
				373	19	2
				£711	3	2

20th November, 1923.

CHARLES UNDERWOOD, F.C.I.S.

To Balance at Bankers, 31/12/22 :				
Mural Prize Fund -	£30	0	0	
On Deposit -	300	0	0	
General Balance -	43	19	2	
			<u>£373</u>	19 2
.. Subscriptions -	-	-	-	360 11 3
.. Donations -	-	-	-	62 16 0
.. Interest on the following				
Investments :				
War Loan -	190	0	0	
War Stock -	210	10	6	
				<u>18 5 6</u>
	<u>£400</u>	10	6	
.. Interest on Bank Deposit	-	-	-	4 9 5
				<u>£820</u> 1 4

By Purchase of Pictures -	-	-	-	£426	18	0
.. General Expenses -	-	-	-	68	15	4
.. Balance at Bankers, 31/12/23:						
On Deposit -	£300	0	0			
General Balance -	24	8	0			
				324	8	0
				£820	1	4

9th January, 1924.

CHARLES UNDERWOOD, F.C.I.S.

## Fund for Prints and Drawings

A SPECIAL Fund for the acquisition of British and Foreign Prints and Drawings, distinct from the general fund of the Society, was founded in 1919. Prints or drawings purchased by this Fund will remain for a limited period in the Society's possession, and will be available for exhibition, both in London and in the provinces. They will then be offered to the Trustees of the British Museum for presentation to the Department of Prints and Drawings, or to other galleries. The Keeper of Prints and Drawings will, *ex officio*, administer the Fund, and make such purchases from it as he thinks desirable, reporting to the Committee.

A list of the principal acquisitions from 1920 to 1923, and a statement of accounts are appended. A more detailed separate Report, with list of Subscribers, was issued early in 1924. A first exhibition, consisting of works acquired up to April, 1920, was held at 22 Montagu Square, in May of that year. Other exhibitions were held during 1920 at the Art Gallery, Derby, and the Mappin Art Gallery, Sheffield; and, in 1921, at the Laing Art Gallery, Newcastle-upon-Tyne, and the Leeds Art Club, at 22 Montagu Square, W., and at the Corporation Art Gallery, Bradford; and, in 1922, at the City Art Gallery, York, and the Municipal Art Gallery, Birkenhead. In March, 1923, another exhibition was held at 22 Montagu Square, and the English works acquired by the Fund were included in the exhibition held at Grosvenor House in July.

A first instalment of the Fund's acquisitions, comprising 31 single prints by Toulouse-Lautrec, Nieuwenkamp, etc., and sets of prints by M. Busset, A. Renoir and F. S. Unwin (total cost, £94 3s. 4d.) was presented to the British Museum in 1922. The Trustees have recently accepted the much more considerable gift of 11 drawings (including specimens of G. L. Brockhurst, J. Currie, I. L. Gloag, S. Gosse, A. E. John, B. Meninsky, W. Rothenstein, A. D. Rutherford and E. Wadsworth) and 150 prints, almost exclusively of the British School, acquired before 1923. The cost of this collection, so far as it was made by purchase, was £348 15s. od. The nucleus of a collection suitable for future exhibitions, and a large number of foreign prints and drawings remain in the Society's possession.

Applications for the loan of works acquired by this Fund are invited, and should be addressed to the Keeper of Prints and Drawings, British Museum, who will furnish all particulars. Offers of subscriptions or gifts to the Fund should be sent to the same address. Subscribers are invited to make the Fund known among their friends, additional subscriptions being still much needed for its maintenance and extension.



# Acquisitions in 1920

## I. PURCHASES

### Drawings—

DEGAS, EDGAR	-	-	Torse de femme nue	-	-	-	Black Chalk.
"	"	-	La Sortie du Bain. (Study for lithograph, L.D. 64)	-	-	-	Black Chalk.
FORAIN, J.-L.	-	-	Femme nue assise sur son lit	-	-	-	Black and Red Chalk.
MARCHAND, J.	-	-	Paysage (Cagnes, Alpes Maritimes)	-	-	-	Pen and Ink.
PICART-LEDoux	-	-	Village de Lavardin	-	-	-	Pen and Ink.
ROTHENSTEIN, W.	-	-	View of Ypres	-	-	-	Gouache.
RUTHERSTON, A. D.	-	-	Gorge du Loup, Grasse	-	-	-	Water Colour.
SEGONZAC, A. DUNOYER DE	-	-	La Sieste	-	-	-	Pen and Ink.
VLAMINCK	-	-	Landscape	-	-	-	Water Colour.
WHEATLEY, JOHN	-	-	Portrait of W. H. Davies (poet)	-	-	-	Water Colour.

### Prints—

BATTEN, J. D.	-	-	Apples and Red Admirals	-	-	-	Colour Print.
BLAMPED, EUGENE	-	-	Flies	-	-	-	Dry-point.
BROCKHURST, G. L.	-	-	Mélanie	-	-	-	Etching.
COSMATTI, ETTORE	-	-	Two Views on the Lake of Zurich	-	-	-	Woodcuts.
COUSSENS, ARMAND	-	-	Provençal Landscape	-	-	-	Etching.
DEGAS, EDGAR	-	-	Après le Bain (L.D. 60v)	-	-	-	Lithograph.
GIBBINGS, ROBERT	-	-	Clear Waters ; Fowey Harbour	-	-	-	Woodcuts.
GILL, ERIC	-	-	Vesica ; Crucifix ; Money Changers	-	-	-	Woodcuts.
GRIGGS, F. L., A.R.A.	-	-	Palace Farm	-	-	-	Etching.
HAGREEN, PHILIP	-	-	A Pastoral ; From the Walls of Theleme	-	-	-	Woodcuts.
HENDERSON, E. M.	-	-	Wounded Lion	-	-	-	Lithograph.
JOHN, A. E., A.R.A.	-	-	The Tinkers	-	-	-	Lithograph.
MACKIE, C. H.	-	-	Picardy Poplars ; The Combat ; The Sign Post	-	-	-	Colour Prints.
MIGNONNEY, JULES	-	-	Après le Bain	-	-	-	Woodcut.
NASH, JOHN	-	-	Bee Orchis ; Wild Orchids	-	-	-	Woodcuts.
NIEUWENKAMP, W. O. J.	-	-	Native Boats on the Beach, Java	-	-	-	Etching.
OSBORNE, MALCOLM, A.R.A.	-	-	William Morris, after Watts	-	-	-	Mezzotint.
RAVERAT, GWENDOLEN	-	-	Bathsheba	-	-	-	Woodcut.
STEINLEN, T. A.	-	-	Cat asleep	-	-	-	Soft-ground Etching
TOULOUSE-LAUTREC, H. DE	-	-	Le Lever ; Lender en buste (in colours)	-	-	-	Lithographs.

## II. GIFTS

FORAIN, J.-L.	-	-	Le Calvaire ; Les Notables	-	-	-	Etchings.
"	"	-	Le Tremplin	-	-	-	Lithograph.
LIGHTFOOT, MAXWELL	-	-	Conway	-	-	-	Red Chalk Drawing.
GORDON	-	-	Presented by Miss E. Q. Henriques.	-	-	-	
MENINSKY, BERNARD	-	-	A Baby	-	-	-	Pencil Drawing.
			Presented by F. D. Samuel, Esq.	-	-	-	



*Robin Guthrie.*  
Portrait of the Artist's Brother

ROBIN GUTHRIE

6½ by 9 inches



Breton Study  
10½ by 6½ inches  
PAUL GAUGUIN



Street at Dinan

AUGUSTE LEPERE

7 x 8½ inches

# Acquisitions in 1921

## I. PURCHASES

### Drawings—

BROCKHURST, G. L.	-	Head of Connemara Peasant	-	-	Study for Etching.
CURRIE, JOHN	-	Nude Study. "Little Helen O'Henry"	-	-	Red Chalk.
GLOAG, ISOBEL	-	In the Garden	-	-	Water Colour.
GAUGUIN, PAUL	-	Two Sheets of Studies (Brittany and Martinique)	-	-	Pencil and Water Colour.

### Prints—

BISNARD, ALBERT	-	Dans les cendres (Coppier 57)	-	-	Etching.
BROCKHURST, G. L.	-	Connemara Peasant (1st state, one of three proofs)	-	-	Etching.
DUFRESNE	-	A la Guadeloupe	-	-	Etching.
FRELAUT, JEAN	-	Village de Locmiquel	-	-	Etching.
JOHN, A. E., A.R.A.	-	Strolling Musicians	-	-	Lithograph.
LEE, SYDNEY, A.R.A.	-	The Limestone Rock	-	-	Woodcut.
MOORE, T. STURGE	-	Pan on an Island	-	-	Woodcut.
RENOIR, AUGUSTE	-	Portfolio of Reproductions, published by the Marées Society	-	-	
REDON, ODILON	-	Le Coursier	-	-	Lithograph.
STEINLEN, T. A.	-	Maxim Gorki	-	-	Lithograph.
UNWIN, F. S.	-	The Maloja Set (in portfolio)	-	-	Etchings.
WENCKEBACH, L. O.	-	The Stoning of St. Stephen	-	-	Woodcut.
WHITE, ETHELBERG	-	The Hamlet	-	-	Woodcut.

## II. GIFTS

FORAIN, J.-L.	-	Conseil Juridique	-	-	Lithograph.
		<i>Presented by T. Simpson, Esq.</i>			
HOLROYD, SIR CHARLES	-	The Ladies' Guest House, Monte Oliveto	-	-	Etching.
		<i>Presented by C. Dodgson, Esq.</i>			
WADSWORTH, E.	-	Five Woodcuts and a Lithograph	-	-	
		<i>Presented by the Artist.</i>			
WHITE, ETHELBERG	-	The Farm	-	-	Woodcut.
		<i>Presented by the Artist.</i>			

# Acquisitions in 1922

## I. PURCHASES

### Drawings—

LEPERE, A.	-	-	-	View in Dinan	-	-	-	Pen and Sepia Wash.
MARCHAND, J.	-	-	-	Femme à la cruche	-	-	-	Red Chalk.
PICASSO, PABLO	-	-	-	Nude Study	-	-	-	Pen and Ink.

### Prints—

BATTEN, J. D.	-	-	-	Centaurs (two versions).	The Harpies	Colour Prints.
BATTEN, M. E.	-	-	-	Magnolias	-	Colour Print.
BEAUFREIRE, A. M.	-	-	-	Riantec	-	Etching.
BELOT, G.	-	-	-	Chêne et Roseau	-	Woodcut.
BEN SUSSEN, R.	-	-	-	Les Signes du Zodiac	-	Twelve Woodcuts.
BONFILS, R.	-	-	-	Le Matin. La Fleuriste	-	Woodcuts.
BROUET, A.	-	-	-	La Femme au chien	-	Etching.
GUSMAN, P.	-	-	-	Tivoli. Two Landscapes	-	Woodcuts.
HAGREEN, P.	-	-	-	A Valley without a name	-	Woodcut.
HENDERSON, E. M.	-	-	-	Pumas	-	Lithograph.
LEE, S., A.R.A.	-	-	-	A Mountain Fortress	-	Aquatint.
LEMOINE	-	-	-	Chimères	-	Two Woodcuts.
NASH, P.	-	-	-	Winter Wood	-	Woodcut.
NEVINSON, C. R. W.	-	-	-	Brooklyn Bridge	-	Dry-point.
PAUL, HERMANN	-	-	-	En Camargue (Set of 8)	-	Woodcuts.
PLATT, J.	-	-	-	Sennen Cove, Cornwall	-	Colour Print.
ROYDS, MABEL A.	-	-	-	Dewali	-	Colour Print.
RUSHBURY, H.	-	-	-	Cours de Toros	-	Dry-point.
STRANG, W., R.A.	-	-	-	A Farm in Brittany	-	Dry-point.
"	"	"	"	Portrait of David Strang	-	Engraving.
VERPILLEUX, E.	-	-	-	Interior of St. Paul's	-	Colour Print.
VIILLARD, E.	-	-	-	La Rue	-	Lithograph. Printed in Colours.

## II. GIFTS

### Drawings—

ROBERTS, W. P.	-	-	-	Infantry Fatigue Party. Forge Barn	-
----------------	---	---	---	------------------------------------	---

*Presented by E. Wadsworth, Esq.*

WADSWORTH, E.	-	-	-	Slag Heap at Leeds Steel Works, 1920	-
---------------	---	---	---	--------------------------------------	---

*Presented by the Artist.*

### Prints—

HALL, E. CLARKE	-	-	-	Two Etchings of a Girl's Head	-
-----------------	---	---	---	-------------------------------	---

*Presented by F. D. Samuel, Esq.*

SAVAGE, R.	-	-	-	Behemoth	-
------------	---	---	---	----------	---

*Presented by R. A. Walker, Esq.*

URUSHIBARA, Y.	-	-	-	Lilies	-
----------------	---	---	---	--------	---

*Presented by the Artist.*

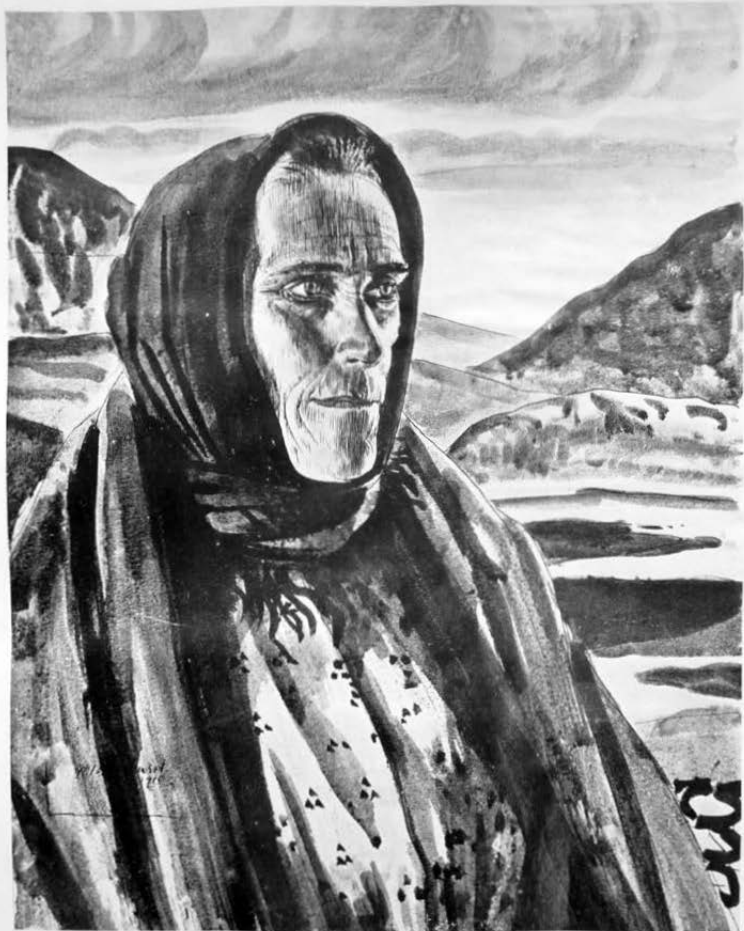
WHITE, E.	-	-	-	Morning	-
-----------	---	---	---	---------	---

*Presented by the Artist.*

Woodcut from *The Dial*.

Colour Print

Woodcut.



A Connemara Peasant

G. L. BROCKHURST

18½ by 14½ inches

# Acquisitions in 1923

## I. PURCHASES

### Drawings—

BURN, R. J.	-	-	-	Nude Figure (study for decorative painting intended for the New County Hall)	
GUTHRIE, R.	-	-	-	Portrait Sketch	Pen and Ink.
INNES, J. D.	-	-	-	Quarry in South of France	Water Colour.
LEWIS, A. N.	-	-	-	Head of a Child	Pencil.
NIXON, JOB	-	-	-	An Italian Flour Mill	Study for Etching.

### Prints—

AUSTIN, R. S.	-	-	-	The Roman Madonna. Blind Beggar of Tivoli	Etchings.
BLAMPID, E.	-	-	-	The White Horse	Etching.
DEY, MUKUL	-	-	-	Two Santal Women	Dry-point.
GALANIS, D.	-	-	-	Le Château des Papes, Avignon	Wood-engraving.
GOSSE, S.	-	-	-	Dabs	Etching.
ISANDER, G.	-	-	-	Stortorget, Stockholm	Etching.
KNIGHT, L.	-	-	-	Dressing-room, No. 1	Etching.
LABOUREUR, J. E.	-	-	-	La plage déserte. En forêt	Engravings.
LAURENCIN, M.	-	-	-	Pantomime. La Femme à l'éventail	Etchings.
"	-	-	-	La danseuse aux fleurs	Lithograph.
LEWIS, A. N.	-	-	-	Head of a Negro	Dry-point.
MESTROVIC, I.	-	-	-	Portfolio of 21 Lithographs	
MURPHY, J. J. A.	-	-	-	Shad Porgy. Out of To-day. Two Women at Work	Woodcuts.
NASH, J.	-	-	-	Sheep Shearing. Landscape	Woodcuts.
NASH, P.	-	-	-	The Bay. The Dyke by the Road	Woodcuts.
NEVINSON, C. R. W.	-	-	-	A Paris Window	Dry-point.
NIXON, J.	-	-	-	An Italian Festa	Etching.
PICASSO, P. (after)	-	-	-	Les Acrobates	Colour Print by Villon.
PLATT, J.	-	-	-	Pilchard Boats, Cornwall	Colour Print.
SCHMUTZER, F.	-	-	-	Portrait of the Artist	Etching.
SCHELFHOUT, L.	-	-	-	Flight into Egypt	Dry-point.
SEABY, A. W.	-	-	-	Flying Swans	Colour Print.
SHEPHERD, J. A.	-	-	-	Melancholy	Lithograph.
SICKERT, W.	-	-	-	Ennui (large Plate)	Etching.
STRANG, D.	-	-	-	Downs near Amberley	Etching.
VLAMINCK, M. DE	-	-	-	Vallée de Nesle. Nature-morte	Lithographs.
WHITE, E.	-	-	-	The Old Barn	Woodcut.

## II. GIFTS

LABOUREUR, J. E.	-	-	-	La Blanchisseuse	Engraving.
MARPLES, G.	-	-	-	Presented by Miss C. M. Mitchell. Jackdaws of Chartres	Etching.
VALLET, E.	-	-	-	Presented by R. A. Walker, Esq. A Woman of Valais	Etching.
				Presented by C. Dodgson, Esq.	

## Acquisitions in 1924

### Drawings—

BECKER, H.	-	-	-	Landscape	-	-	-	-	Pencil.
				<i>Presented by J. G. Lousada, Esq.</i>					
FRIESZ, E. OTHON	-	-	-	Havre, 1921	-	-	-	-	Water Colour.
				<i>Presented by Sir Michael Sadler, C.B.</i>					
KLINGHOFFER, C.	-	-	-	Girl Seated	-	-	-	-	Pencil.
				<i>Presented by A. E. Anderson, Esq.</i>					
LEGRAND, LOUIS	-	-	-	Bertrand qui dort	-	-	-	-	Pencil (study for Etching).
MONNINGTON, T. W.	-	-	-	Study for Woman in <i>The Wine Press</i> .					

### Prints—

BELCHER, G.	-	-	-	Portrait of J. Ivimey	-	-	-	-	Etching.
GAUGUIN, P.	-	-	-	Portfolio of Woodcuts	-	-	-	-	
GRIGGS, F. L., A.R.A.	-	-	-	The Cresset	-	-	-	-	Etching.
HALL, E. CLARKE	-	-	-	Wuthering Heights	-	-	-	-	Etching.
HOYTEMA, T. VAN	-	-	-	Four Lithographs	-	-	-	-	
LAURENCIN, M.	-	-	-	Chanson	-	-	-	-	Etching.
				<i>Presented by Miss C. M. Mitchell.</i>					
SENSANI, G. C.	-	-	-	Venere e Amore	-	-	-	-	Woodcut.
UNWIN, F. S.	-	-	-	The Potting Shed	-	-	-	-	Lithograph.
VALADON, S.	-	-	-	La Toilette	-	-	-	-	Etching.
<i>Woodcuts by E. DAGLISH, E. GILL, N. JAMES, E. LAMBERT, S. LEE, J. J. A. MURPHY, J. and P. NASH, E. WHITE.</i>									
<i>Colour Prints by W. GILES, E. KIRKPATRICK, W. J. PHILLIPS, A. RANKIN, Y. URUSHIBARA.</i>									

## List of Subscribers, 1923

*Donations are marked with an asterisk (\*).*

Anonymous	-	-	-	-	*£5	5	0	Dodgson, Mrs. C.	-	-	-	-	£2	2	0	
Bailey, John	-	-	-	-	-	1	1	0	Druce, Miss E. M. C.	-	-	-	-	1	0	0
Ball, Mrs.	-	-	-	-	-	0	10	0	Du Cane, Lady	-	-	-	-	1	1	0
Barlow, Miss H.	-	-	-	-	-	1	0	0	Farquhar, Miss H.	-	-	-	-	1	0	0
Beale, Miss M. S.	-	-	-	-	-	1	1	0	Gardner, J. H.	-	-	-	-	1	1	0
Bennett, Arnold	-	-	-	-	-	5	5	0	Grenfell, Capt. F. H.	-	-	-	-	*2	2	0
Bone, Muirhead	-	-	-	-	-	1	1	0	Halkett, Mrs. G. R.	-	-	-	-	2	2	0
Brierley, W. H.	-	-	-	-	-	1	1	0	"	"	-	-	-	*2	2	0
Buchanan, Mrs.	-	-	-	-	-	1	1	0	Hambleden, Viscount	-	-	-	-	5	0	0
Bunyon, Miss	-	-	-	-	-	1	1	0	Harrington, Dr. H. N.	-	-	-	-	2	2	0
Clarke, Louis C. G.	-	-	-	-	-	3	3	0	Harris, Rt. Hon. F. L.	-	-	-	-	1	1	0
Collings, E. H. R.	-	-	-	-	-	1	1	0	Henderson, George	-	-	-	-	10	0	0
Corder, Walter S.	-	-	-	-	-	1	1	0	"	"	-	-	-	*1	5	0
Dent, Hugh R.	-	-	-	-	-	1	1	0	Hornby, C. H. St. J.	-	-	-	-	3	3	0
Dodd, Mrs. F.	-	-	-	-	-	2	2	0	Hutchinson, E. M.	-	-	-	-	5	5	0
Dodgson, C., C.B.E.	-	-	-	-	-	10	10	0	Jessop, Mrs.	-	-	-	-	1	1	0
"	"	-	-	-	-	*2	0	0	Jones, E. Peter	-	-	-	-	5	0	0

# PRINT FUND

STATEMENT OF ACCOUNTS FROM 1ST JANUARY TO 31ST DECEMBER, 1920.

RECEIPTS.		EXPENDITURE.	
By Balance	£87 13 9	Drawings	£204 11 6
" Subscriptions	109 14 6	Prints	314 8 6
" Donations	314 1 0	Postage, Cheque Book, etc.	2 17 9
" Sale of Lithographs	25 0 0	Hanging Exhibition	1 10 0
" Sale of Woodcuts	10 10 0	Printing Catalogues, etc.	5 0 0
" Sale of Catalogues	4 2 6		
" Sale of Frames	1 7 0		
" Collected at Derby	0 16 3	Balance	£528 7 9
" Interest on Deposit	3 7 5		
	<u>£556 12 5</u>		<u>£556 12 5</u>

STATEMENT OF ACCOUNTS FROM 1ST JANUARY TO 31ST DECEMBER, 1921.

RECEIPTS.		EXPENDITURE.	
By Balance	£28 4 8	Drawings	£50 9 0
" Subscriptions	131 16 6	Prints	95 7 0
" Donations	16 6 6	Postage	6 8 0
" Proceeds of Exhibition	23 0 0	Printing and Stationery	3 10 5
" Sale of Reports	0 6 6	Expenses of Exhibition	9 14 8
" Interest on Deposit	1 19 8	Boards for Mounting	4 7 0
		Balance	£169 16 1
	<u>£201 13 10</u>		<u>£201 13 10</u>

STATEMENT OF ACCOUNTS FROM 1ST JANUARY TO 31ST DECEMBER, 1922.

RECEIPTS.		EXPENDITURE.	
By Balance	£31 17 9	Drawings	£36 9 4
" Subscriptions	145 15 6	Prints	115 11 0
" Donations	11 11 0	Cheque Book	1 0 0
" Interest on Deposit	0 14 11	Expenses of Exhibition	3 3 9
		Frames	4 14 0
		Postage, etc.	1 12 8
		Printing	13 3 9
		Balance	£175 14 6
	<u>£189 19 2</u>		<u>£189 19 2</u>

STATEMENT OF ACCOUNTS FROM 1ST JANUARY TO 31ST DECEMBER, 1923.

RECEIPTS.		EXPENDITURE.	
By Balance	£14 4 8	Drawings	£36 15 0
" Subscriptions	142 17 6	Prints	138 9 0
" Donations	20 0 0	Postage	1 0 0
" Proceeds of Exhibition	19 2 8	Exhibition Expenses	10 15 0
" Sale of Photographs	1 1 0		
" Interest on Deposit	0 8 7	Balance	£186 19 0
	<u>£197 14 5</u>		<u>£197 14 5</u>



## LIST OF SUBSCRIBERS

23

Laurence, H. C.	-	-	-	£1	1	0	Sadler, Sir Michael, C.B.	-	-	-	*£1	0	0		
Lefèvre, L. H., & Son	-	-	-	*5	5	0	Samuel, F. D.	-	-	-	-	2	2	0	
Levis, H. C.	-	-	-	-	1	1	0	Samuel, Miss Ida	-	-	-	-	0	10	6
Lingard, Asa	-	-	-	-	5	5	0	Sandwich, Earl of	-	-	-	-	2	2	0
Lousada, J. G.	-	-	-	-	2	2	0	Schuster, F. V.	-	-	-	-	2	2	0
Macbeth, Donald	-	-	-	-	1	1	0	Sedgwick, Mrs.	-	-	-	-	1	1	0
Madan, Frank	-	-	-	-	1	1	0	Shaw, Robert N.	-	-	-	-	5	0	0
Marsh, Ernest	-	-	-	-	2	2	0	Sheffield, Corporation of	-	-	-	-	2	2	0
Mason, Mrs.	-	-	-	-	1	1	0	Simpson, T.	-	-	-	-	2	2	0
Meek, C. F. U.	-	-	-	-	2	2	0	Tatton, R. G.	-	-	-	-	2	2	0
Mosenthal, Mrs. G.	-	-	-	-	2	2	0	Temperley, Henry	-	-	-	-	1	1	0
Newton, W. M.	-	-	-	-	2	2	0	Temperley, R.	-	-	-	-	1	1	0
Onslow, Miss K.	-	-	-	-	1	1	0	Tinker, W.	-	-	-	-	2	2	0
Pearce, C. Maresco	-	-	-	-	2	2	0	Tozer, H.	-	-	-	-	1	1	0
Pybus, P. J., C.B.E.	-	-	-	-	2	2	0	Turner, P. M.	-	-	-	-	*1	1	0
Rothenstein, W.	-	-	-	-	1	0	0	Wadsworth, E.	-	-	-	-	5	0	0
Russell, Dr. John	-	-	-	-	1	1	0	Walker, R. A.	-	-	-	-	1	1	0
Rutherford, A. D.	-	-	-	-	1	1	0	Walston, Sir Charles	-	-	-	-	1	1	0
Rutherford, C. L.	-	-	-	-	5	0	0	Watt, A. S., C.B.E.	-	-	-	-	2	2	0
Sadler, Sir Michael, C.B.	-	-	-	-	1	0	0	Witt, Sir Robert, C.B.E.	-	-	-	-	1	1	0